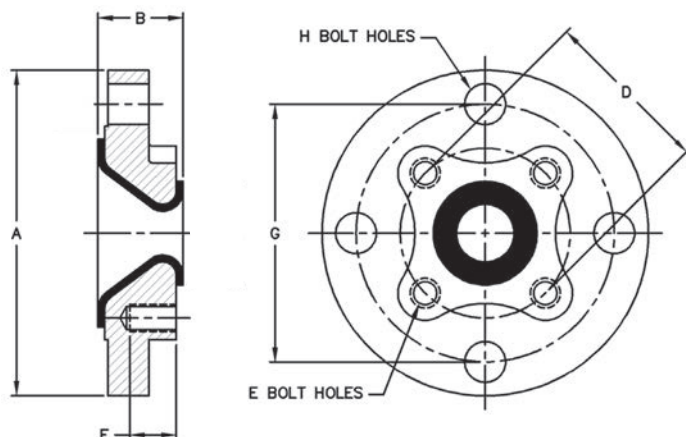


Ductile Iron Reducing Filler Flanges, PTFE-Lined

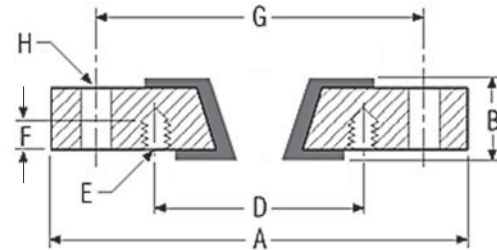
All sizes available lined with ATL
 All sizes rated for Full Vacuum to 450 F (232 C)
 Consult factory for weights
 Dimension "A" = ASME Class 150 Flange OD



ASME B16.5 Class 150 Flanged										
Major Size NPS (DN)	Minor Size NPS (DN)	Thickness, B inch (mm)	H - Bolt Holes			E - Bolt Holes				Bolt Hole Rotation
			No.	Size	Bolt Circle Dia. G inch (mm)	No.	Size	Bolt Circle Dia. D inch (mm)	Depth F inch (mm)	
1 (25)	1/2 (15)	1 5/8 (41)	4	5/8	3 1/8 (79)	4	1/2-13	2 3/8 (67)	7/8 (22)	45°
	3/4 (20)						2 3/4 (70)			
1 1/2 (40)	1 (25)	1 9/16 (40)	4	5/8	3 7/8 (98)	4	1/2-13	3 1/8 (79)	7/8 (22)	45°
2 (50)	1 (25)	1 9/16 (40)	4	3/4	4 3/4 (121)	4	1/2-13	3 1/8 (79)	7/8 (22)	45°
	1 1/2 (40)						3 7/8 (98)			
2 1/2 (65)	2 (50)	1 9/16 (40)	4	3/4	5 1/2 (140)	4	5/8-11	4 3/4 (121)	7/8 (22)	45°
3 (80)	1 (25)	1 5/8 (41)	4	3/4	6 (152)	4	1/2-13	3 1/8 (79)	3/4 (19)	45°
	1 1/2 (40)							3 7/8 (98)		
	2 (50)	1 3/4 (44)					7/8 (22)			
	2 1/2 (65)	1 5/8 (41)								
4 (100)	1 (25)	1 7/8 (48)	8	3/4	7 1/2 (191)	4	1/2-13	3 1/8 (79)	11/16 (17)	0°
	1 1/2 (40)	1 5/8 (41)								
	2 (50)	2 (51)					7/8 (22)			
	3 (80)	1 3/4 (44)								
5 (125)	4 (100)	1 5/8 (41)	8	7/8	8 1/2 (216)	8	5/8-11	7 1/2 (191)	1 (25)	22.5°
6 (150)	1 1/2 (40)	1 7/8 (48)	8	7/8	9 1/2 (241)	4	1/2-13	3 7/8 (98)	11/16 (17)	0°
	2 (50)						4 3/4 (121)	3/4 (19)		
	3 (80)	1 3/4 (44)					1 (25)			
	4 (100)	2 1/8 (54)						7/8 (22)	22.5°	
	5 (125)	11 3/4 (44)				8	3/4-10	8 1/2 (216)		1 (25)
8 (200)	4 (100)	2 (51)	8	7/8	11 3/4 (298)	8	5/8-11	7 1/2 (191)	7/8 (22)	22.5°
	6 (150)						3/4-10	9 1/2 (241)	1 1/8 (29)	0°
10 (250)	4 (100)	2 7/16 (62)	12	1	14 1/4 (362)	8	5/8-11	7 1/2 (191)	7/8 (22)	0°
	6 (150)						3/4-10	9 1/2 (241)	1 (25)	
	8 (200)							11 3/4 (298)		

Carbon Steel Reducing Filler Flanges, PTFE-Lined

All sizes available lined with ATL
 1" - 8" rated for Full Vacuum to 450 F (232 C)
 10" - 12" are not vacuum rated
 Consult factory for weights
 Dimension "A" = ASME Class 150 Flange OD
 Also available in stainless steel



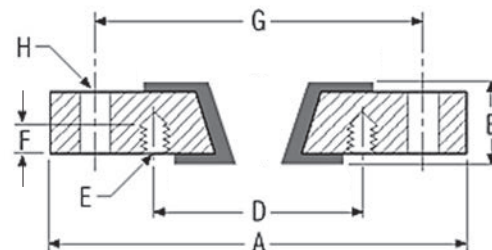
ASME B16.5 Class 150 Flanged											
Major Size NPS (DN)	Minor Size NPS (DN)	Thickness, B inch (mm)	H - Bolt Holes*			E - Bolt Holes				Bolt Hole Rotation	
			No.	Size	Bolt Circle Dia. G inch (mm)	No.	Size	Bolt Circle Dia. D inch (mm)	Depth F inch (mm)		
1 (25)	1/2 (15)	1 1/2 (38)	4	1/2-13	3 1/8 (79)	4	1/2-13	2 3/8 (67)	11/16 (17)	45°	
	3/4 (20)							2 3/4 (70)			
1 1/2 (40)	1 (25)	1 1/2 (38)	4	1/2-13	3 7/8 (98)	4	1/2-13	3 1/8 (79)	9/16 (14)	45°	
2 (50)	1 (25)	1 1/2 (38)	4	5/8-11	4 3/4 (121)	4	1/2-13	3 1/8 (79)	9/16 (14)	0°	
	1 1/2 (40)							3 7/8 (98)	5/8 (16)	45°	
3 (80)	1 (25)	1 1/2 (38)	4	5/8-11	6 (152)	4	1/2-13	3 1/8 (79)	9/16 (14)	0°	
	1 1/2 (40)							3 7/8 (98)	5/8 (16)		
	2 (50)							4 3/4 (121)	3/4 (19)	45°	
4 (100)	1 (25)	2 (51)	8	3/4	7 1/2 (191)	4	1/2-13	3 1/8 (79)	9/16 (14)	0°	
	1 1/2 (40)	3 7/8 (98)						5/8 (16)			
	2 (50)	1 1/2 (38)		5/8-11			4 3/4 (121)	3/4 (19)			
	3 (80)						6 (152)				
6 (150)	1 1/2 (40)	2 (51)	8	7/8	9 1/2 (241)	4	1/2-13	3 7/8 (98)	9/16 (14)	0°	
	2 (50)							4 3/4 (121)	5/8 (16)		
	3 (80)			3/4-10			6 (152)	3/4 (19)			
	4 (100)	7 1/2 (191)									
8 (200)	3 (80)	2	8	7/8	11 3/4 (298)	4	5/8-11	6 (152)	3/4 (19)	0°	
	4 (100)							7 1/2 (191)			
	6 (150)	1 1/2 (38)		3/4-10			8	9 1/2 (241)	13/16 (21)		
10 (250)	3 (80)	2 (51)	12	1	14 1/4 (362)	4	5/8-11	6 (152)	5/8 (16)	0°	
	4 (100)							7 1/2 (191)	3/4 (19)		
	6 (150)			7/8-9			8	3/4-10	9 1/2 (241)		13/16 (21)
	8 (200)								11 3/4 (298)		
12 (300)	6 (150)	2 (51)	8	3/4-10	17 (432)	8	3/4-10	9 1/2 (241)	13/16 (21)	0°	
	8 (200)							11 3/4 (298)	1 1/4 (32)		
	10 (250)		12	7/8-9		12	14 1/4 (362)				

* Most "H" bolt holes are threaded.

Example: In above table, 5/8-11 is threaded. 7/8 is not threaded.

Carbon Steel Reducing Filler Flanges, PTFE-Lined

All sizes available lined with ATL
 1" - 8" rated for Full Vacuum to 450 F (232 C)
 Consult factory for weights
 Dimension "A" = ASME Class 300 Flange OD
 Also available in stainless steel



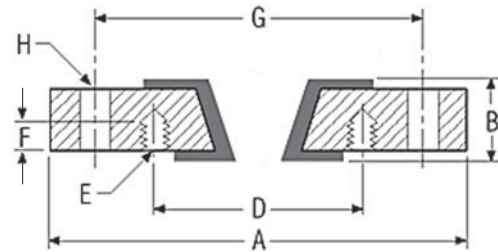
ASME B16.5 Class 300 Flanged										
Major Size NPS (DN)	Minor Size NPS (DN)	Thickness, B inch (mm)	H - Bolt Holes*			E - Bolt Holes				Bolt Hole Rotation
			No.	Size	Bolt Circle Dia. G inch (mm)	No.	Size	Bolt Circle Dia. D inch (mm)	Depth F inch (mm)	
1 1/2 (40)	1 (25)	1 1/2 (38)	4	3/4-10	4 1/2 (114)	4	5/8-11	3 1/2 (89)	5/8 (16)	45°
2 (50)	1 (25)	1 1/2 (38)	8	5/8-11	5 (127)	4	5/8-11	3 1/2 (89)	5/8 (16)	0°
	1 1/2 (40)						3/4-10	4 (102)		
3 (80)	1 (25)	1 1/2 (38)	8	3/4-10	6 5/8 (168)	4	5/8-11	3 1/2 (89)	5/8 (16)	0°
	1 1/2 (40)						3/4-10	4 1/2 (114)		
	2 (50)						5/8-11	5 (127)	3/4 (19)	22.5°
4 (100)	1 (25)	2 (51)	8	7/8	7 7/8 (200)	4	5/8-11	3 1/2 (89)	5/8 (16)	0°
	1 1/2 (40)	3/4-10					4 1/2 (114)			
	2 (50)	1 1/2 (38)		8		3/4-10	5/8-11	5 (127)	3/4 (19)	22.5°
	3 (80)						3/4-10	6 5/8 (168)		
6 (150)	1 (25)	2 (51)	12	7/8	10 5/8 (270)	4	5/8-11	3 1/2 (89)	5/8 (16)	0°
	2 (50)							5 (127)		
	3 (80)			3/4-10		6 5/8 (168)	3/4 (19)	7.5°		
	4 (100)	7 7/8 (200)								
8 (200)	3 (80)	2 (51)	12	1	13 (330)	8	3/4-10	6 5/8 (168)	3/4 (19)	0°
	4 (100)	1 1/2 (38)						7/8-9		
	6 (150)			10 5/8 (270)		13/16 (21)	15°			

* Most "H" bolt holes are threaded.

Example: In above table, 5/8-11 is threaded. 7/8 is not threaded.

Carbon Steel Reducing Filler Flanges, PFA/PTFE-Lined Non-Standard Sizes

Not vacuum rated
Consult factory for weights
Dimension "A" = ASME Class 150 Flange OD
Also available in stainless steel

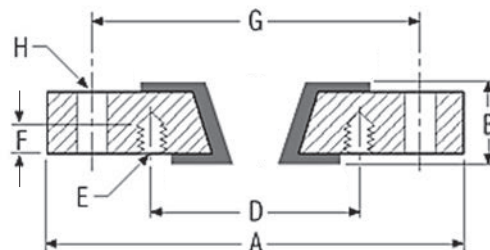


ASME B16.5 Class 150 Flanged												
Major Size NPS (DN)	Minor Size NPS (DN)			Thickness, B inch (mm)	H - Bolt Holes*			E - Bolt Holes				Bolt Hole Rotation
					No.	Size	Bolt Circle Dia. G inch (mm)	No.	Size	Bolt Circle Dia. D inch (mm)	Depth F inch (mm)	
1 1/2 (40)	1/2 (15)	PFA		13/16 (21)	4	1/2-13	3 7/8 (98)	4	1/2-13	2 3/8 (67)	7/16 (11)	45°
	3/4 (20)									2 3/4 (70)	1/2 (13)	
	1 1/4 (32)									3 1/2 (89)		
2 (50)	1/2 (15)	PFA		7/8 (22)	4	5/8-11	4 3/4 (121)	4	1/2-13	2 3/8 (67)	1/2 (13)	45°
	3/4 (20)									2 3/4 (70)		
	1 1/4 (32)									3 1/2 (89)		
2 1/2 (65)	1 (25)	PFA		1 (25)	4	3/4	5 1/2 (140)	4	1/2-13	3 1/8 (79)	5/8 (16)	0°
	1 1/2 (40)					5/8-11				3 7/8 (98)		45°
	2 (50)	PTFE				5/8-11				4 3/4 (121)	9/16 (14)	
3 (80)	1 1/4 (32)	PFA		1 3/16 (30)	4	5/8-11	6 (152)	4	1/2-13	3 1/2 (89)	1/2 (13)	45°
	2 1/2 (65)	PTFE							5/8-11	5 1/2 (140)		
4 (100)	2 1/2 (65)	PTFE		1 3/16 (30)	8	5/8-11	7 1/2 (191)	4	5/8-11	5 1/2 (140)	11/16 (17)	0°
5 (125)	2 (50)	PTFE		1 3/16 (30)	8	7/8	8 1/2 (216)	4	5/8-11	4 3/4 (121)	11/16 (17)	0°
	3 (80)					3/4-10				6 (152)		
6 (150)	3/4 (20)	PFA		1 1/4 (32)	8	7/8	9 1/2 (241)	4	1/2-13	2 3/4 (70)	11/16 (17)	0°
8 (200)	1 (25)	PFA		1 3/8 (35)	8	7/8	11 3/4 (298)	4	1/2-13	3 1/8 (79)	11/16 (17)	0°
	1 1/2 (40)									3 7/8 (98)	5/8 (16)	
	2 (50)	PTFE							5/8-11	4 3/4 (121)	11/16 (17)	
10 (250)	1 (25)	PFA		1 7/16 (37)	12	1	14 1/4 (362)	4	1/2-13	3 1/8 (79)	3/4 (19)	0°
	1 1/2 (40)									3 7/8 (98)	11/16 (17)	
	2 (50)	PTFE							5/8-11	4 3/4 (121)	3/4 (19)	
12 (300)	1 (25)	PFA		1 1/2 (38)	12	1	17 (432)	4	1/2-13	3 1/8 (79)	7/8 (22)	0°
	1 1/2 (40)									3 7/8 (98)		
	2 (50)	PTFE							4 3/4 (121)	3/4 (19)		
	3 (80)								6 (152)			
	4 (100)								7 1/2 (191)			
							8				15°	

* Most "H" bolt holes are threaded.
Example: In above table, 5/8-11 is threaded. 7/8 is not threaded.

Carbon Steel Reducing Filler Flanges, PTFE-Lined Non-Standard Sizes

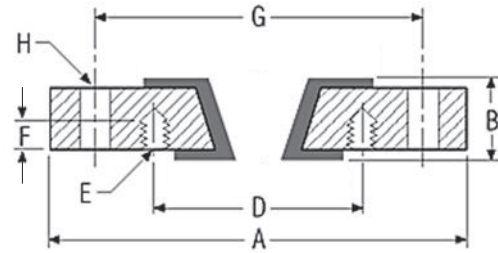
Not vacuum rated
Consult factory for weights
Dimension "A" = ASME Class 150 Flange OD
Also available in stainless steel



ASME B16.5 Class 150 Flanged										
Major Size NPS (DN)	Minor Size NPS (DN)	Thickness, B inch (mm)	H - Bolt Holes			E - Bolt Holes				Bolt Hole Rotation
			No.	Size	Bolt Circle Dia. G inch (mm)	No.	Size	Bolt Circle Dia. D inch (mm)	Depth F inch (mm)	
12 (300)	1 (25)	1 1/2 (38)	12	1	17 (432)	4	1/2-13	3 1/8 (79)	3/4 (19)	0°
	1 1/2 (40)						3 7/8 (98)			
	2 (50)						4 3/4 (121)			
	3 (80)						6 (152)			
	4 (100)						7 1/2 (191)			
14 (350)	2 (50)	1 5/8 (41)	12	1 1/8	18 3/4 (476)	4	5/8-11	4 3/4 (121)	11/16 (17)	0°
	3 (80)						6 (152)			
	4 (100)						7 1/2 (191)			
	6 (150)						9 1/2 (241)	1 (25)		
	8 (200)					11 3/4 (298)				
	10 (250)					14 1/4 (362)	7/8 (22)			
	12 (300)			17 (432)						
16 (400)	3 (80)	1 11/16 (43)	16	1 1/8	21 1/4 (540)	4	5/8-11	6 (152)	3/4 (19)	0°
	4 (100)						7 1/2 (191)	3/4 (19)		
	6 (150)					9 1/2 (241)	1 (25)			
	8 (200)					11 3/4 (298)	1 (25)			
	10 (250)					14 1/4 (362)	7/8 (22)			
	12 (300)					17 (432)	7/8 (22)			
	14 (350)	1 15/16 (49)		1-8		18 3/4 (476)	1 1/16 (27)			

Carbon Steel Reducing Filler Flanges, PTFE-Lined Non-Standard Sizes, Class 150 Flanged

Not vacuum rated
Consult factory for weights
Dimension "A" = ASME Class 150 Flange OD
Also available in stainless steel



ASME B16.5 Class 150 Flanged										
Major Size NPS (DN)	Minor Size NPS (DN)	Thickness, B inch (mm)	H - Bolt Holes*			E - Bolt Holes				Bolt Hole Rotation
			No.	Size	Bolt Circle Dia. G inch (mm)	No.	Size	Bolt Circle Dia. D inch (mm)	Depth F inch (mm)	
18	3	1 13/16 (46)	16	1 1/4	22 3/4 (578)	4	5/8-11	6 (152)	3/4 (19)	0°
	7 1/2 (191)							3/4 (19)		
	8					3/4-10	9 1/2 (241)	1 (25)		
							11 3/4 (298)	1 (25)		
	12					7/8-9	14 1/4 (362)	7/8 (22)		
							17 (432)	1 (25)		
20	3	1 15/16 (49)	20	1 1/4	25 (635)	4	5/8 - 11	6 (152)	3/4 (19)	0°
	8					3/4 - 10	11 3/4 (298)	1 (25)		
	12			7/8 - 9		17 (432)	1 1/8 (29)			
	18			1 1/8 - 7		22 3/4 (578)	1 1/8 (29)			
24	3	2 1/8 (54)	20	1 3/8	29 1/2 (749)	4	5/8 - 11	6 (152)	11/16 (17)	0°
	8					3/4 - 10	9 1/2 (241)	3/4 (19)		
	12					7/8 - 9	14 1/4 (362)	1 (25)		
	12					7/8 - 9	17 (432)	1 (25)		

* Some "H" bolt holes are threaded.
Example: In above table, 1 1/8 - 7 is threaded. 1 3/8 is not threaded.
For sizes not shown, consult factory.