

## Reducing Filler Flanges, PP / PVDF / PFA-Lined

### Liner Availability

PVDF: 1" - 8" (DN25 - DN200)  
 PP: 1" - 12" (DN25 - DN400)  
 PFA: 1" - 6" (DN25 - DN150)

Consult factory for size availability and dimensions of 14" - 16" with Polypropylene liner.

Straight-bore available on request

Available in carbon steel or stainless steel

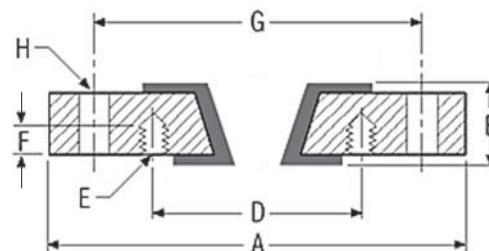
### Vacuum Ratings:

1" - 8" PVDF-lined fittings are rated for full vacuum at 275°F.

1" - 12" Polypropylene-lined fittings are rated for full vacuum at 225°F.

Consult factory for availability of 14" - 16" Polypropylene-lined reducing filler flanges.

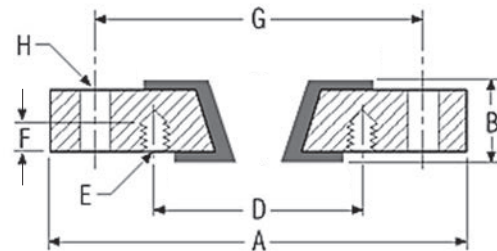
Consult factory for vacuum ratings on PFA-lined fittings.



ASME B16.5 Class 150 Flanged										
Major Size NPS (DN)	Minor Size NPS (DN)	Thickness, B inch (mm)	H - Bolt Holes			E - Bolt Holes				Bolt Hole Rotation
			No.	Size	Bolt Circle Dia. G inch (mm)	No.	Size	Bolt Circle Dia. D inch (mm)	Depth F inch (mm)	
1 (25)	1/2 (15)	1 1/2 (38)	4	1/2-13	3 1/8 (79)	4	1/2-13	2 3/8 (67)	11/16 (17)	45°
	3/4 (20)							2 3/4 (70)		
1 1/2 (40)	1 (25)	1 1/2 (38)	4	1/2-13	3 7/8 (98)	4	1/2-13	3 1/8 (79)	9/16 (14)	45°
2 (50)	1 (25)	1 1/2 (38)	4	5/8-11	4 3/4 (121)	4	1/2-13	3 1/8 (79)	9/16 (14)	0°
	1 1/2 (40)							3 7/8 (98)	5/8 (16)	45°
3 (80)	1 (25)	1 1/2 (38)	4	5/8-11	6 (152)	4	1/2-13	3 1/8 (79)	9/16 (14)	0°
	1 1/2 (40)							3 7/8 (98)	5/8 (16)	
	2 (50)							4 3/4 (121)	3/4 (19)	45°
4 (100)	1 (25)	2 (51)	8	3/4	7 1/2 (191)	4	1/2-13	3 1/8 (79)	9/16 (14)	0°
	1 1/2 (40)							3 7/8 (98)	5/8 (16)	
	2 (50)	1 1/2 (38)		5/8-11			4 3/4 (121)	3/4 (19)		
	3 (80)						6 (152)			
6 (150)	1 1/2 (40)	2 (51)	8	7/8	9 1/2 (241)	4	1/2-13	3 7/8 (98)	9/16 (14)	0°
	2 (50)							4 3/4 (121)	5/8 (16)	
	3 (80)			3/4-10			5/8-11	6 (152)	3/4 (19)	
	4 (100)	7 1/2 (191)								
8 (200)	3 (80)	2	8	7/8	11 3/4 (298)	4	5/8-11	6 (152)	3/4 (19)	0°
	4 (100)							7 1/2 (191)		
	6 (150)	1 1/2 (38)		3/4-10			8	3/4-10	9 1/2 (241)	
10 (250)	4 (100)	2 (51)	12	1	14 1/4 (362)	8	5/8-11	7 1/2 (191)	3/4 (19)	0°
	6 (150)							9 1/2 (241)		
	8 (200)			7/8-9			11 3/4 (298)	13/16 (21)		
12 (300)	6 (150)	2 (51)	8	3/4-10	17	8	3/4-10	9 1/2 (241)	13/16 (21)	0°
	8 (200)							11 3/4 (298)		
	10 (250)		12	7/8-9		12	7/8-9	14 1/4 (362)	1 1/4 (32)	

## Reducing Filler Flanges, PP / PVDF / PFA-Lined

Rated for full vacuum to liner maximum temperature  
 Consult factory for weights  
 Dimension "A" = ASME Class 300 Flange OD  
 Straight-bore available on request  
 Also available in stainless steel



ASME B16.5 Class 300 Flanged										
Major Size NPS (DN)	Minor Size NPS (DN)	Thickness, B inch (mm)	H - Bolt Holes			E - Bolt Holes				Bolt Hole Rotation
			No.	Size	Bolt Circle Dia. G inch (mm)	No.	Size	Bolt Circle Dia. D inch (mm)	Depth F inch (mm)	
1 1/2 (40)	1 (25)	1 1/2 (38)	4	3/4-10	4 1/2 (114)	4	5/8-11	3 1/2 (89)	5/8 (16)	45°
2 (50)	1 (25)	1 1/2 (38)	8	5/8-11	5 (127)	4	5/8-11	3 1/2 (89)	5/8 (16)	0°
	1 1/2 (40)						4 (102)			
3 (80)	1 (25)	1 1/2 (38)	8	3/4-10	6 5/8 (168)	4	5/8-11	3 1/2 (89)	5/8 (16)	0°
	1 1/2 (40)						4 1/2 (114)			
	2 (50)						5 (127)	3/4 (19)	22.5°	
4 (100)	1 (25)	2 (51)	8	7/8	7 7/8 (200)	4	5/8-11	3 1/2 (89)	5/8 (16)	0°
	1 1/2 (40)						4 1/2 (114)			
	2 (50)	1 1/2 (38)		3/4-10		8	5/8-11	5 (127)	3/4 (19)	22.5°
	3 (80)						6 5/8 (168)			
6 (150)	1 (25)	2 (51)	12	7/8	10 5/8 (270)	4	5/8-11	3 1/2 (89)	5/8 (16)	0°
	2 (50)						5 (127)			
	3 (80)					3/4-10	6 5/8 (168)	3/4 (19)		
	4 (100)	7 7/8 (200)		7.5°						
8 (200)	3 (80)	2 (51)	12	1	13	8	3/4-10	6 5/8 (168)	3/4 (19)	0°
	4 (100)							7 7/8 (200)		
	6 (150)	1 1/2 (38)				7/8-9	12	10 5/8 (270)	13/16 (21)	15°

PP-lined and ETFE-lined fittings are available as rotationally-lined in standard and custom configurations up to NPS 24 (DN 600).