

Equal Tees, PP / PVDF / PFA-Lined

Vacuum Ratings:

1" - 8" PVDF-lined fittings are rated for full vacuum at 275°F.

1" - 12" Polypropylene-lined fittings with Cast DI or Cast Steel construction are rated for full vacuum at 225°F.

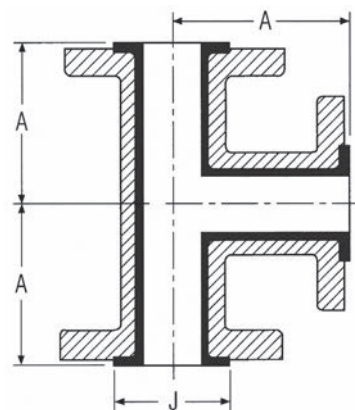
Consult factory for vacuum ratings on 14" and larger Polypropylene-lined fittings

Consult factory for vacuum ratings on PFA-lined fittings.

Fittings shown as Cast DI or Cast Steel have fixed flanges

PP/PVDF lined fittings available in CS with rotating flanges

PP/PVDF lined fittings available in SS with fixed or rotating flanges



ASME B16.5 Class 150 Flanged												
Size (NPS)	Size (DN)	Dimensions				PP		PVDF		PFA	Weight	
		A		J		Cast DI A395	Cast Steel A216 WCB	Cast DI A395	Cast Steel A216 WCB	Cast Steel A216 WCB	lbs.	kg
		Inch	mm	Inch	mm							
1	25	3 1/2	89	2	51	●	●	●	●	●	9.5	4.3
1 1/2	40	4	102	2 7/8	73	●	●	●	●	●	14	6.4
2	50	4 1/2	114	3 5/8	92	●	●	●	●	●	20.5	9.3
3	80	5 1/2	140	5	127	●	●	●	●	●	40	18.2
4	100	6 1/2	165	6 3/16	157	●	●	●	●	●	65	29.5
6	150	8	203	8 1/2	216	●	●	●	●	●	100	45.5
8	200	9	229	10 5/8	270	●	●	●	●	●	183	83.2
10	250	11	279	12 3/4	324		●	●	●		257	116.8
12	300	12	305	15	381		●	●	●		395	179.5
14	350	16 1/4*	413	16 1/4	413	● Fabricated Steel					Consult Factory	
16	400	17 1/4*	438	18 1/2	470	● Fabricated Steel					Consult Factory	

ASME B16.5 Class 300 Flanged										
Size (NPS)	Size (DN)	Dimensions				PP	PVDF	PFA	Weight	
		A		J		Cast Steel A216 WCB	Cast Steel A216 WCB	Cast Steel A216 WCB	lbs.	kg
		Inch	mm	Inch	mm					
1	25	4	102	2	51	●	●	●	Consult Factory	
1 1/2	40	4 1/2	114	2 7/8	73	●	●	●		
2	50	5	127	3 5/8	92	●	●	●		
3	80	6	152	5	127	●	●	●		
4	100	7	178	6 3/16	157	●	●	●		
6	150	8 1/2	216	8 1/2	216	●	●	●		

PP-lined fittings larger than 12" are available as rotationally-lined in standard and custom configurations up to NPS 24 (DN 600).

*Dimension not according to ASME B16.5 Class 150. Class 150 dimension available on request.

Reducing Tees, Class 150 PP / PVDF / PFA-Lined

Vacuum Ratings:

1" - 8" PVDF-lined fittings are rated for full vacuum at 275°F.

1" - 12" Polypropylene-lined fittings with Cast DI or Cast Steel construction are rated for full vacuum at 225°F.

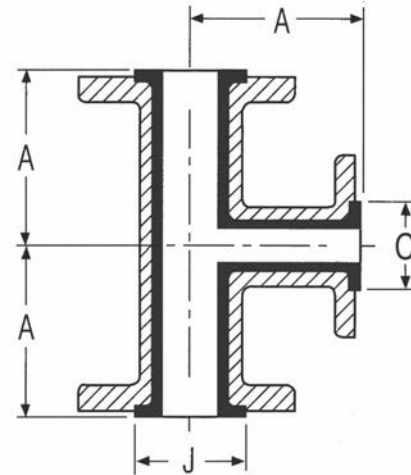
Consult factory for vacuum ratings on 14" and larger Polypropylene-lined fittings

Consult factory for vacuum ratings on PFA-lined fittings.

Fittings shown as Cast DI or Cast Steel have fixed flanges

PP/PVDF lined fittings available in CS with rotating flanges

PP/PVDF lined fittings available in SS with fixed or rotating flanges



ASME B16.5 Class 150 Flanged												
Size NPS (DN)	Size NPS (DN)	Dimensions						PP	PVDF	PFA	Weight	
		A		J		C		Cast Steel A216 WCB	Cast Steel A216 WCB	Cast Steel A216 WCB		
		Inch	mm	Inch	mm	Inch	mm				lbs.	kg
1 1/2 (40)	1 (25)	4	102	2 7/8	73	2	51	●	●	●	13	5.9
2 (50)	1 (25)	4 1/2	114	3 5/8	92	2	51	●	●	●	20	9.1
	1 1/2 (40)					2 7/8	73	●	●	●	21	9.5
3 (80)	1 (25)	5 1/2	140	5	127	2	51	●	●	●	31	14.1
	1 1/2 (40)					2 7/8	73	●	●	●	34	15.5
	2 (50)					3 5/8	92	●	●	●	36	16.4
4 (100)	1 (25)	6 1/2	165	6 3/16	157	2	51	●	●	●	54	24.5
	1 1/2 (40)					2 7/8	73	●	●	●	58	26.4
	2 (50)					3 5/8	92	●	●	●	59	26.8
	3 (80)					5	127	●	●	●	61	27.7
6 (150)	1 (25)	8	203	8 1/2	216	2	51	●	●	●	94	42.7
	1 1/2 (40)					2 7/8	73	●	●	●	95	43.2
	2 (50)					3 5/8	92	●	●	●	96	43.6
	3 (80)					5	127	●	●	●	97	44.1
	4 (100)					6 3/16	157	●	●	●	100	45.5
8	1 (25)	9	229	10 5/8	270	2	51	●	●	●	134	60.9
	1 1/2 (40)					2 7/8	73	●	●	●	135	61.4
	2 (50)					3 5/8	92	●	●	●	136	61.8
	3 (80)					5	127	●	●	●	140	63.6
	4 (100)					6 3/16	157	●	●	●	150	68.2
	6 (150)					8 1/2	216	●	●	●	160	72.7

PP-lined fittings larger than 12" are available as rotationally-lined in standard and custom configurations up to NPS 24 (DN 600).

Reducing Tees, Class 150 PP / PVDF / PFA-Lined

Vacuum Ratings:

1" - 8" PVDF-lined fittings are rated for full vacuum at 275°F.

1" - 12" Polypropylene-lined fittings with Cast DI or Cast Steel construction are rated for full vacuum at 225°F.

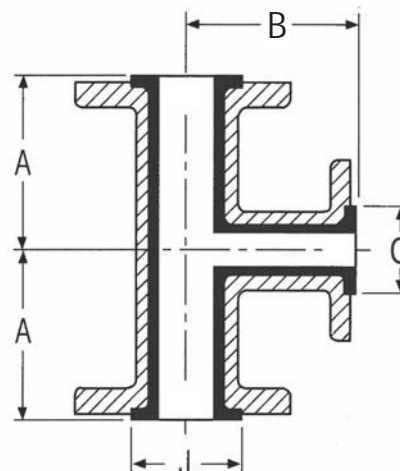
Consult factory for vacuum ratings on 14" and larger Polypropylene-lined fittings

Consult factory for vacuum ratings on PFA-lined fittings.

Fittings shown as Cast DI or Cast Steel have fixed flanges

PP/PVDF lined fittings available in CS with rotating flanges

PP/PVDF lined fittings available in SS with fixed or rotating flanges



ASME B16.5 Class 150 Flanged													
Size NPS (DN)	Size NPS (DN)	Dimensions								PP		Weight	
		A		B		J		C		Fabricated Steel	lbs.	kg	
		Inch	mm	Inch	mm	Inch	mm	Inch	mm				
10	4 (100)	11	279	11	279	12 3/4	324	6 3/16	157	•	Consult Factory		
	6 (150)							8 1/2	216	•			
	8 (200)							10 5/8	270	•			
12	6 (150)	12	305	12	305	15	381	8 1/2	216	•			
	8 (200)							10 5/8	270	•			
	10 (250)							12 3/4	324	•			
14	8 (200)	16 1/4*	413	14*	356	16 1/4	413	10 5/8	270	•			
	10 (250)			14 3/8*	365			17 1/4	324	•			
	12 (300)			15 3/8*	391			15	381	•			
16	10 (250)	17 1/4*	438	15 3/8*	391	18 1/2	470	12 3/4	324	•			
	12 (300)			16 3/8*	416			15	381	•			
	14 (350)			17 1/4*	438			16 1/4	412	•			

ASME B16.5 Class 300 Flanged														
Size NPS (DN)	Size NPS (DN)	Dimensions								PP	PVDF	PFA	Weight	
		A		B		J		C		Cast Steel A216 WCB	Cast Steel A216 WCB	Cast Steel A216 WCB	lbs.	kg
		Inch	mm	Inch	mm	Inch	mm	Inch	mm					
1 1/2 (40)	1 (25)	4 1/2	114	4 1/2	114	2 7/8	73	2	51	•	•	•	20.6	9.4
2 (50)		5	127	5	127	3 5/8	92			•	•	•	22	10
3 (80)	2 (50)	6	152	6	152	5	127	3 5/8	92	•	•	•	36	16.4
4 (100)		7	178	7	178	6 3/16	157			•	•	•	59	26.8

PP-lined fittings larger than 12" are available as rotationally-lined in standard and custom configurations up to NPS 24 (DN 600).

*Dimension not according to ASME B16.5 Class 150. Class 150 dimension available on request.