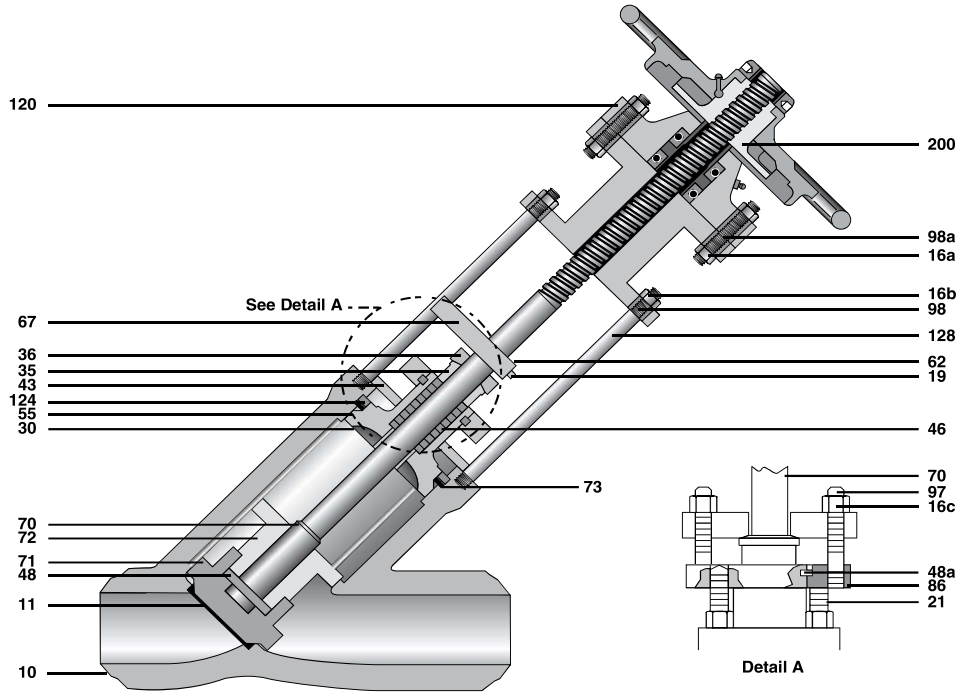




Materials Y-Globe Valves



| NO | PART NAME | CARBON STEEL | 1¼ CHROME | 2¼ CHROME | 9Cr-1Mo-V | 316 STAINLESS |
|-----|--------------------------|---|---|---|---|---|
| 10 | BODY | ASTM A216 GR WCB OR WCC ¹ W/CO-CR | ASTM A217 GR WC6 W/CO-CR | ASTM A217 GR WC9 W/CO-CR | ASTM A217 GR C12A W/CO-CR | ASTM A351 GR CF8M W/CO-CR |
| 11 | SEAT RINGS | CARBON STEEL W/ CO-CR OVERLAY | 316 SS OR 2¼ CR W/ CO-CR OVERLAY | 316 SS OR 2¼ CR W/ CO-CR OVERLAY | ALLOY 91 W/ CO-CR OVERLAY | 316L W/CO-CR OVERLAY |
| 16a | NUT | ASTM A194 GR 2H | ASTM A194 GR 2H | ASTM A194 GR 2H | ASTM A194 GR 2H | ASTM A194 GR 2H |
| 16b | NUT | ASTM A194 GR 2H | ASTM A194 GR 2H | ASTM A194 GR 2H | ASTM A194 GR 2H | ASTM A194 GR 2H |
| 16c | NUT | ASTM A194 GR 2H | ASTM A194 GR 2H | ASTM A194 GR 2H | ASTM A194 GR 2H | ASTM A194 GR 2H |
| 19 | SCREW | A193 GR B7 | A193 GR B7 | A193 GR B7 | A193 GR B7 | A193 GR B7 |
| 21 | JACKING BOLTS | A582 GR 416 | A582 GR 416 | A582 GR 416 | A582 GR 416 | A582 GR 416 |
| 73 | THRUST RING ² | AISI 4140 OR 4340 | AISI 4140 OR 4340 | AISI 4140 OR 4340 | AISI 4140 OR 4340 | AISI 4140 OR 4340 |
| 30 | BONNET | CARBON STEEL W/ CO-CR | ASTM A182 GR F22 W/ CO-CR | ASTM A182 GR F22 W/ CO-CR | ASTM A182 GR F91 W/ CO-CR | ASTM A182 GR F316 W/ CO-CR |
| 35 | GLAND | 12% CHROME | 12% CHROME | 12% CHROME | 12% CHROME | 300 SERIES SST |
| 36 | GLAND FLANGE | CARBON STEEL | CARBON STEEL | CARBON STEEL | CARBON STEEL | CARBON STEEL |
| 43 | LOWER PLATE | CARBON STEEL | CARBON STEEL | CARBON STEEL | CARBON STEEL | CARBON STEEL |
| 46 | PACKING | GRAPHITIC | GRAPHITIC | GRAPHITIC | GRAPHITIC | GRAPHITIC |
| 48 | RETAINER | 11-13% CHROME | 11-13% CHROME | 11-13% CHROME | 11-13% CHROME | 11-13% CHROME |
| 48a | RETAINER | 316 SS | 316 SS | 316 SS | 316 SS | 316 SS |
| 55 | GASKET | GRAPHITE/SS CAPS OR MILD STEEL SILVER PLATED* | GRAPHITE/SS CAPS OR MILD STEEL SILVER PLATED* | GRAPHITE/SS CAPS OR MILD STEEL SILVER PLATED* | GRAPHITE/SS CAPS OR MILD STEEL SILVER PLATED* | GRAPHITE/SS CAPS OR MILD STEEL SILVER PLATED* |
| 62 | KEY | AISI 01 | AISI 01 | AISI 01 | AISI 01 | AISI 01 |
| 67 | STEM GUIDE | CARBON STEEL | CARBON STEEL | CARBON STEEL | CARBON STEEL | CARBON STEEL |
| 70 | STEM | ASTM A582 GR 416 | ASTM A582 GR 416 | ASTM A582 GR 416 | ASTM A582 GR 416 | ASTM A705 GR 630 |
| 71 | DISC | CARBON STEEL W/ CO-CR OVERLAY | 316 SS OR 1¼ CR W/ CO-CR OVERLAY | 316 SS OR 2¼ CR W/ CO-CR OVERLAY | 316 SS W/ CO-CR OVERLAY | 316L SS W/ CO-CR OVERLAY |
| 72 | DISC NUT | CARBON STEEL W/ CO-CR OVERLAY | 316 SS OR 1¼ CR W/ CO-CR OVERLAY | 316 SS OR 2¼ CR W/ CO-CR OVERLAY | 316 SS W/ CO-CR OVERLAY | 316L SS W/ CO-CR OVERLAY |
| 86 | CARRIER | CARBON STEEL | CARBON STEEL | CARBON STEEL | CARBON STEEL | CARBON STEEL |
| 97 | BOLT | ASTM A193 GR B7 | ASTM A193 GR B7 | ASTM A193 GR B7 | ASTM A193 GR B7 | ASTM A193 GR B7 |
| 98 | BOLT | ASTM A193 GR B7 | ASTM A193 GR B7 | ASTM A193 GR B7 | ASTM A193 GR B7 | ASTM A193 GR B7 |
| 98a | BOLT | ASTM A193 GR B7 | ASTM A193 GR B7 | ASTM A193 GR B7 | ASTM A193 GR B7 | ASTM A193 GR B7 |
| 120 | ADAPTER | CARBON STEEL | CARBON STEEL | CARBON STEEL | CARBON STEEL | CARBON STEEL |
| 124 | SEGMENT RING | AISI 4140 OR 4340 | AISI 4140 OR 4340 | AISI 4140 OR 4340 | AISI 4140 OR 4340 | AISI 4140 OR 4340 |
| 128 | COLUMN | CARBON STEEL | CARBON STEEL | CARBON STEEL | CARBON STEEL | CARBON STEEL |
| 200 | ACTUATOR | CONSULT FACTORY | CONSULT FACTORY | CONSULT FACTORY | CONSULT FACTORY | CONSULT FACTORY |

Pacific Valves® reserves the right to change or modify product design or construction without prior notice and without incurring any obligation to make such changes and modifications on products previously or subsequently sold.

NOTES:

1. WCC valve bonnets and internals will be manufactured with 300 series SS and/or 2¼ CR.
2. Thrust ring on all 12" and larger 1500 and all 2500.

*Graphite Pressure Seal Bonnet Gasket standard. Mild Steel Silver Plated available on request.



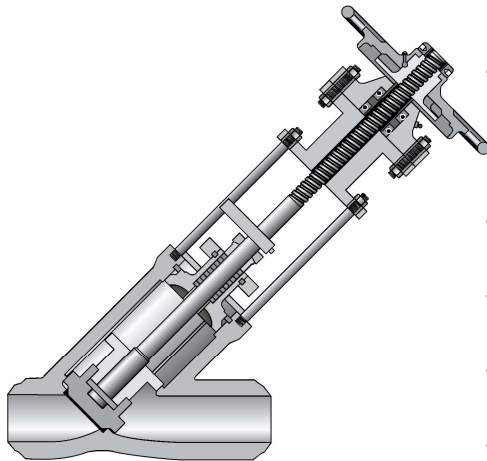
Dimensions Y-Globe Stop & Stop-Check Valves • ASME Class 600

Y-Globe Stop Valves

Fig. No. 59006-7-WE* Butt Weld Ends

Y-Globe Stop-Check Valves

Fig. No. 59506-7-WE* Butt Weld Ends

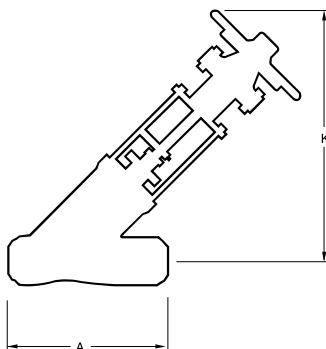


| Dim | Description | | VALVE SIZES (inches) | | | | | | | |
|-----|----------------------|-----|----------------------|-------|-------|-------|-------|-------|-------|--------|
| | | | 6-8 | 10 | 12 | 14 | 16 | 18 | 20 | 24 |
| A | End-to-End Weld Ends | in. | 23.00 | 28.00 | 32.00 | 32.00 | 41.00 | 41.00 | 60.00 | 66.00 |
| | | mm | 584 | 711 | 813 | 813 | 1041 | 1041 | 1524 | 1676 |
| K | Center-to-Top | in. | 25.50 | 35.38 | 45.56 | 45.56 | 77.00 | 77.00 | 85.63 | 108.00 |
| | | mm | 648 | 899 | 1157 | 1157 | 1956 | 1956 | 2175 | 2743 |
| M | Handwheel Dia. | in. | 28 | 36 | 48 | 48 | 48 | 72 | 72 | 72 |
| | | mm | 711 | 914 | 1219 | 1219 | 1219 | 1829 | 1829 | 1829 |
| | Weight Weld Ends | lbs | 820 | 1830 | 2560 | 2560 | 5570 | 5570 | 7500 | 13500 |
| | | kg | 372 | 830 | 1161 | 1161 | 2527 | 2527 | 3398 | 6116 |

VENTURI Y-GLOBE STOP AND STOP-CHECK VALVES

Y-Globe Stop Valves Fig. No. 59006-7-WE* Butt Weld Ends

Y-Globe Stop-Check Valves Fig. No. 59506-7-WE* Butt Weld Ends



| Dim | Description | | VALVE SIZES (inches) | | | | | | | |
|-----|----------------------|-----|----------------------|----------|----------|----------|----------|----------|----------|----------|
| | | | 10x8x10 | 12x10x12 | 14x12x14 | 16x14x16 | 18x16x18 | 20x18x20 | 22x20x22 | 26x24x26 |
| A | End-to-End Weld Ends | in. | 23.00 | 28.00 | 32.00 | 32.00 | 41.00 | 41.00 | 60.00 | 66.00 |
| | | mm | 584 | 711 | 813 | 813 | 1041 | 1041 | 1524 | 1676 |
| K | Center-to-Top | in. | 25.50 | 35.38 | 45.56 | 45.56 | 77.00 | 77.00 | 85.63 | 108.00 |
| | | mm | 648 | 899 | 1157 | 1157 | 1956 | 1956 | 2175 | 2743 |
| M | Handwheel Dia. | in. | 28 | 36 | 48 | 48 | 48 | 72 | 72 | 72 |
| | | mm | 711 | 914 | 1219 | 1219 | 1219 | 1829 | 1829 | 1829 |
| | Weight Weld Ends | lbs | 900 | 2025 | 2825 | 2825 | 6125 | 6125 | 6600 | 7900 |
| | | kg | 408 | 918 | 1281 | 1281 | 2778 | 2778 | 2994 | 3583 |

General Notes:

1. Dimensions, weights, and other engineering data are subject to change or modification. This data is not to be used for construction unless confirmed by Pacific Valves®.
2. For best performance, size for full open operation. See Flow Calculations in the Technical Data Section.
* Specify pipe schedule.
3. Related data available in Technical Data, Actuators, and Accessories sections.
4. Valves supplied with hammerblow handwheel as a standard.



Dimensions Y-Globe Stop & Stop-Check Valves • ASME Class 900

Y-Globe Stop Valves

Fig. No. 59009-7-WE* Butt Weld Ends

Y-Globe Stop-Check Valves

Fig. No. 59509-7-WE* Butt Weld Ends

| Dim | Description | | VALVE SIZES (inches) | | | | | | | | |
|-----|----------------------|-----|----------------------|-------|-------|-------|-------|-------|-------|--------|--------|
| | | | 6 | 8 | 10 | 12 | 14 | 16 | 18 | 20 | 24 |
| A | End-to-End Weld Ends | in. | 27.75 | 30.00 | 36.25 | 42.5 | 43.00 | 54.00 | 63.00 | 54.50 | 59.50 |
| | | mm | 705 | 762 | 921 | 1041 | 1092 | 1372 | 1600 | 1384 | 1511 |
| K | Center-to-Top | in. | 40.47 | 53.38 | 63.58 | 77.84 | 77.84 | 89.62 | 98.11 | 110.97 | 110.83 |
| | | mm | 1028 | 1356 | 1615 | 1977 | 1977 | 2276 | 2492 | 2819 | 2815 |
| M | Handwheel Dia. | in. | 28 | 28 | 36 | 48 | 48 | 48 | 72 | 72 | 72 |
| | | mm | 711 | 711 | 914 | 1219 | 1219 | 1219 | 1829 | 1829 | 1829 |
| | Weight Weld Ends | lbs | 810 | 1560 | 2900 | 3950 | 3950 | 7700 | 7825 | 9800 | 16000 |
| | | kg | 367 | 709 | 1318 | 1795 | 1795 | 3495 | 3550 | 4446 | 7273 |

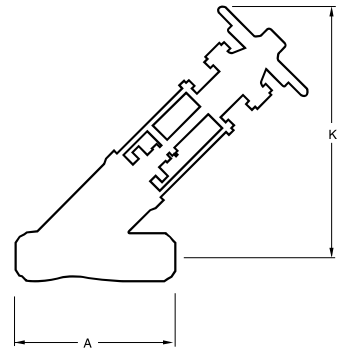


VENTURI Y-GLOBE STOP AND STOP-CHECK VALVES

Y-Globe Stop Valves Fig. No. 59009-7-WE* Butt Weld Ends

Y-Globe Stop-Check Valves Fig. No. 59509-7-WE* Butt Weld Ends

| Dim | Description | | VALVE SIZES (inches) | | | | | | | | |
|-----|----------------------|-----|----------------------|---------|----------|----------|----------|----------|----------|----------|----------|
| | | | 8x6x8 | 10x8x10 | 12x10x12 | 14x12x14 | 16x14x16 | 18x16x18 | 20x18x20 | 22x20x22 | 26x24x26 |
| A | End-to-End Weld Ends | in. | 27.75 | 30.00 | 36.25 | 42.5 | 43.00 | 54.00 | 63.00 | 54.50 | 61.50 |
| | | mm | 705 | 762 | 921 | 1014 | 1092 | 1372 | 1600 | 1384 | 1562 |
| K | Center-to-Top | in. | 40.47 | 53.38 | 63.58 | 77.84 | 77.84 | 89.62 | 98.11 | 110.97 | 110.83 |
| | | mm | 1028 | 1356 | 1615 | 1977 | 1977 | 2276 | 2492 | 2819 | 2815 |
| M | Handwheel Dia. | in. | 28 | 28 | 36 | 48 | 48 | 48 | 72 | 72 | 72 |
| | | mm | 711 | 711 | 914 | 1219 | 1219 | 1219 | 1829 | 1829 | 1829 |
| | Weight Weld Ends | lbs | 810 | 1500 | 2900 | 4100 | 4100 | 8000 | 8000 | 13000 | 16000 |
| | | kg | 367 | 675 | 1305 | 1845 | 1845 | 3600 | 3600 | 5850 | 7200 |



General Notes:

- Dimensions, weights, and other engineering data are subject to change or modification. This data is not to be used for construction unless confirmed by Pacific Valves®.
- For best performance, size for full open operation. See Flow Calculations in the Technical Data Section.
* Specify pipe schedule.
- Related data available in Technical Data, Actuators, and Accessories sections.
- Valves supplied with hammerblow handwheel as a standard.



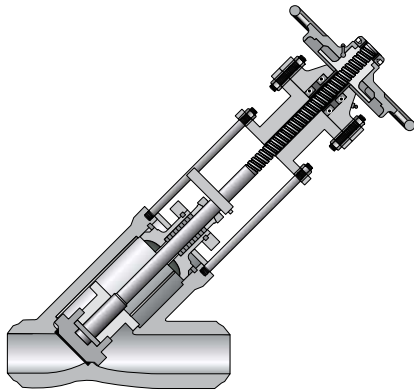
Dimensions Y-Globe Stop & Stop-Check Valves • ASME Class 1500

Y-Globe Stop Valves

Fig. No. 59015-7-WE* Butt Weld Ends

Y-Globe Stop-Check Valves

Fig. No. 59515-7-WE* Butt Weld Ends

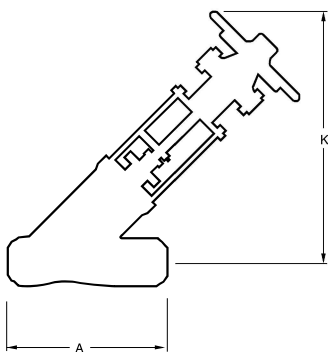


| Dim | Description | VALVE SIZES (inches) | | | | | | | | | |
|-----|----------------------|----------------------|-------|-------|-------|-------|-------|-------|-------|--------|--------|
| | | 6 | 8 | 10 | 12 | 14 | 16 | 18 | 20 | 24 | |
| A | End-to-End Weld Ends | in. | 27.75 | 30.00 | 36.25 | 41.00 | 43.00 | 54.00 | 63.00 | 54.50 | 59.50 |
| | | mm | 705 | 762 | 921 | 1041 | 1092 | 1372 | 1600 | 1384 | 1511 |
| K | Center-to-Top | in. | 40.47 | 53.38 | 63.58 | 77.84 | 77.84 | 89.62 | 98.11 | 110.97 | 110.83 |
| | | mm | 1028 | 1356 | 1615 | 1977 | 1977 | 2276 | 2492 | 2819 | 2815 |
| M | Handwheel Dia. | in. | 28 | 28 | 36 | 48 | 48 | 48 | 72 | 72 | 72 |
| | | mm. | 711 | 711 | 914 | 1219 | 1219 | 1219 | 1829 | 1829 | 1829 |
| | Weight Weld Ends | lbs | 810 | 1560 | 2900 | 3950 | 3950 | 7700 | 7825 | 9800 | 16000 |
| | | kg | 367 | 709 | 1318 | 1795 | 1795 | 3494 | 3550 | 4446 | 7273 |

VENTURI Y-GLOBE STOP AND STOP-CHECK VALVES

Y-Globe Stop Valves Fig. No. 59015-7-WE* Butt Weld Ends

Y-Globe Stop-Check Valves Fig. No. 59515-7-WE* Butt Weld Ends



| Dim | Description | VALVE SIZES (inches) | | | | | | | | | |
|-----|----------------------|----------------------|---------|----------|----------|----------|----------|----------|----------|----------|--------|
| | | 8x6x8 | 10x8x10 | 12x10x12 | 14x12x14 | 16x14x16 | 18x16x18 | 20x18x20 | 22x20x22 | 26x24x26 | |
| A | End-to-End Weld Ends | in. | 27.75 | 30.00 | 36.25 | 41.00 | 43.00 | 54.00 | 63.00 | 54.50 | 61.50 |
| | | mm | 705 | 762 | 921 | 1014 | 1092 | 1372 | 1600 | 1384 | 1562 |
| K | Center-to-Top | in. | 40.47 | 53.38 | 63.58 | 77.84 | 77.84 | 89.62 | 98.11 | 110.97 | 110.83 |
| | | mm | 1028 | 1356 | 1615 | 1977 | 1977 | 2276 | 2492 | 2819 | 2815 |
| M | Handwheel Dia. | in. | 28 | 28 | 36 | 48 | 48 | 48 | 72 | 72 | 72 |
| | | mm | 711 | 711 | 914 | 1219 | 1219 | 1219 | 1829 | 1829 | 1829 |
| | Weight Weld Ends | lbs | 890 | 1730 | 3220 | 4380 | 4380 | 8470 | 8600 | 10750 | 17000 |
| | | kg | 404 | 786 | 1464 | 1991 | 1991 | 3843 | 3900 | 4877 | 7727 |

General Notes:

1. Dimensions, weights, and other engineering data are subject to change or modification. This data is not to be used for construction unless confirmed by Pacific Valves®.
2. For best performance, size for full open operation. See Flow Calculations in the Technical Data Section.
* Specify pipe schedule.
3. Related data available in Technical Data, Actuators, and Accessories sections.
4. Valves supplied with hammerblow handwheel as a standard.



Dimensions Y-Globe Stop & Stop-Check Valves • ASME Class 2500

Y-Globe Stop Valves

Fig. No. 59025H-7-WE* Butt Weld Ends

Y-Globe Stop-Check Valves

Fig. No. 59525H-7-WE* Butt Weld Ends

| Dim | Description | | VALVE SIZES (inches) | | | | | | | | |
|-----|----------------------|-----|----------------------|-------|-------|-------|-------|-------|-------|-------|--------|
| | | | 6 | 8 | 10 | 12 | 14 | 16 | 18 | 20 | 24 |
| A | End-to-End Weld Ends | in. | 30.00 | 30.00 | 36.00 | 41.00 | 48.75 | 48.75 | 58.00 | 58.00 | 68.00 |
| | | mm | 762 | 762 | 914 | 1041 | 1238 | 1238 | 1473 | 1473 | 1727 |
| K | Center-to-Top | in. | 54.36 | 54.36 | 61.08 | 72.04 | 78.07 | 78.07 | 97.99 | 97.99 | 113.75 |
| | | mm | 1381 | 1381 | 1551 | 1830 | 1983 | 1983 | 2489 | 2489 | 2889 |
| M | Handwheel Dia. | in. | 28 | 28 | 36 | 36 | 48 | 48 | 72 | 72 | 72 |
| | | mm | 711 | 711 | 914 | 914 | 1219 | 1219 | 1829 | 1829 | 1829 |
| | Weight Weld Ends | lbs | 1650 | 1650 | 3290 | 4745 | 7600 | 7600 | 11300 | 11300 | 17500 |
| | | kg | 750 | 750 | 1348 | 2157 | 3448 | 3448 | 5136 | 6864 | 7940 |

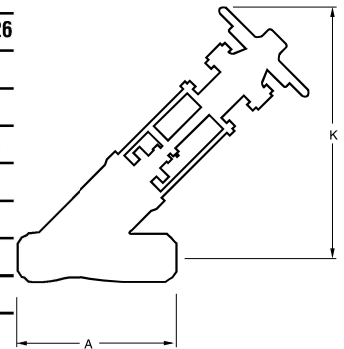


VENTURI Y-GLOBE STOP AND STOP-CHECK VALVES

Y-Globe Stop Valves Fig. No. 59025H-7-WE* Butt Weld Ends

Y-Globe Stop-Check Valves Fig No. 59525H-7-WE* Butt Weld Ends

| Dim | Description | | VALVE SIZES (inches) | | | | | | | | |
|-----|----------------------|-----|----------------------|---------|----------|----------|----------|----------|----------|----------|----------|
| | | | 8x6x8 | 10x8x10 | 12x10x12 | 14x12x14 | 16x14x16 | 18x16x18 | 20x18x20 | 22x20x22 | 26x24x26 |
| A | End-to-End Weld Ends | in. | 30.00 | 30.00 | 36.00 | 41.00 | 48.75 | 48.75 | 58.00 | 58.00 | 68.00 |
| | | mm | 762 | 762 | 914 | 1041 | 1238 | 1238 | 1473 | 1473 | 1727 |
| K | Center-to-Top | in. | 54.36 | 54.36 | 61.08 | 72.04 | 78.07 | 78.07 | 97.99 | 97.99 | 113.75 |
| | | mm | 1381 | 1381 | 1551 | 1830 | 1983 | 1983 | 2489 | 2489 | 2889 |
| M | Handwheel Dia. | in. | 28 | 28 | 48 | 48 | 48 | 48 | 72 | 72 | 72 |
| | | mm | 711 | 711 | 1219 | 1219 | 1219 | 1219 | 1829 | 1829 | 1829 |
| | Weight Weld Ends | lbs | 1865 | 1865 | 3267 | 5270 | 8360 | 8360 | 12000 | 12000 | 19250 |
| | | kg | 846 | 846 | 1482 | 2395 | 3793 | 3793 | 5455 | 5455 | 8734 |



General Notes:

1. Dimensions, weights, and other engineering data are subject to change or modification. This data is not to be used for construction unless confirmed by Pacific Valves®.
2. For best performance, size for full open operation. See Flow Calculations in the Technical Data Section.
* Specify pipe schedule.
3. Related data available in Technical Data, Actuators, and Accessories sections.
4. Valves supplied with hammerblow handwheel as a standard.