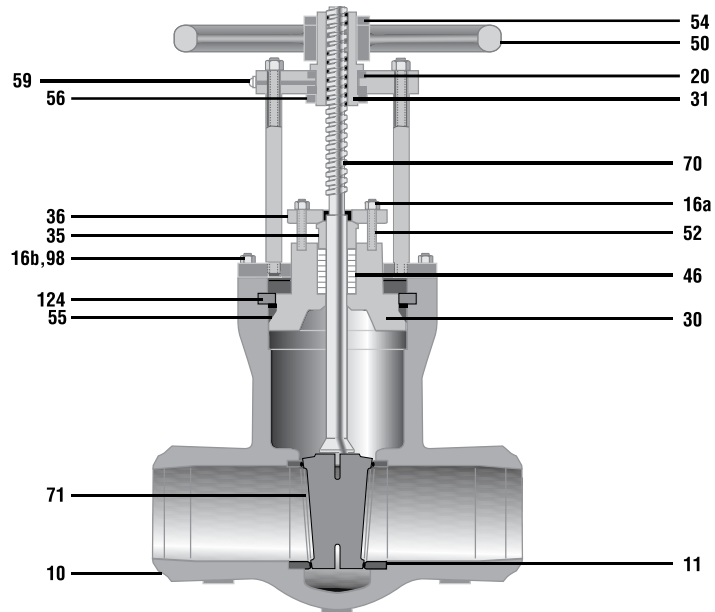




Materials Gate Valves



NO	PART NAME	CARBON STEEL	1 ¼ CHROME	2 ¼ CHROME	9Cr-1Mo-V	316 STAINLESS
50	HANDWHEEL	ASTM A47 GR 32510	ASTM A47 GR 32510	ASTM A47 GR 32510	ASTM A47 GR 32510	ASTM A47 GR 32510
31	YOKE SLEEVE	ASTM A148 ALLOY 955	ASTM A148 ALLOY 955	ASTM A148 ALLOY 955	ASTM A148 ALLOY 955	ASTM A148 ALLOY 955
20	BEARINGS	MFG STD	MFG STD	MFG STD	MFG STD	MFG STD
52	GLAND STUD	CARBON STEEL	CARBON STEEL	CARBON STEEL	CARBON STEEL	CARBON STEEL
16a	NUTS	ASTM A194 GR 2H	ASTM A194 GR 2H	ASTM A194 GR 2H	ASTM A194 GR 2H	ASTM A194 GR 2H
36	GLAND FLANGE	CARBON STEEL	CARBON STEEL	CARBON STEEL	CARBON STEEL	CARBON STEEL
35	GLAND	12% CHROME	12% CHROME	12% CHROME	12% CHROME	300 SERIES SST
46	PACKING	GRAPHITIC*	GRAPHITIC**	GRAPHITIC**	GRAPHITIC**	GRAPHITIC**
124	SEGMENT RING	AISI 4140 OR 4340	AISI 4140 OR 4340	AISI 4140 OR 4340	AISI 4140 OR 4340	AISI 4140 OR 4340
73	THRUST RING ⁴	AISI 4340 OR 4140	AISI 4340 OR 4140	AISI 4340 OR 4140	AISI 4340 OR 4140	AISI 4340 OR 4140
55	GASKET	GRAPHITE/SS CAPS OR MILD STEEL SILVER PLATED***	GRAPHITE/SS CAPS OR MILD STEEL SILVER PLATED***	GRAPHITE/SS CAPS OR MILD STEEL SILVER PLATED***	GRAPHITE/SS CAPS OR MILD STEEL SILVER PLATED***	GRAPHITE/SS CAPS OR MILD STEEL SILVER PLATED***
30	BONNET	CARBON STEEL W/CO-CR	ASTM A182 GR F22 W/CO-CR	ASTM A182 GR F22 W/CO-CR	ASTM A182 GR F91 W/CO-CR	ASTM A182 GR F316 W/CO-CR
70	STEM	13% CHROME	13% CHROME	13% CHROME	13% CHROME	ASTM A705 GR 630
10	BODY ¹	ASTM A216 GR WCB/WCC ³	ASTM A217 GR WC6	ASTM A217 GR WC9	ASTM A217 GR C12A	ASTM A351 GR CF8M
71	WEDGE DISC	CARBON STEEL W/CO-CR OVERLAY	316 / 316L OR 2 ¼ CR W/CO-CR OVERLAY	316L SS OR 2 ¼ CR W/CO-CR OVERLAY	316L SS W/CO-CR OVERLAY	ASTM A351 GR CF8M W/CO-CR OVERLAY
11	SEAT RINGS	CARBON STEEL W/CO-CR OVERLAY	316 / 316L OR 2 ¼ CR W/CO-CR OVERLAY	316L SS OR 2 ¼ CR W/CO-CR OVERLAY	ALLOY 91 W/CO-CR OVERLAY	316L SS W/CO-CR OVERLAY
98	BONNET STUDS	ASTM A193 GR B7	ASTM A193 GR B7	ASTM A193 GR B7	ASTM A193 GR B7	ASTM A193 GR B7
16b	STUD NUTS	ASTM A194 GR 2H	ASTM A194 GR 2H	ASTM A194 GR 2H	ASTM A194 GR 2H	ASTM A194 GR 2H
25	CARRIER ²	CARBON STEEL	F11	F22	SST	316 SS
26	PIN ²	12% CR	12% CR	12% CR	12% CR	17-4 PH
27	SPRING ²	INCONEL	INCONEL	INCONEL	INCONEL	INCONEL
56	JAM NUT	CARBON STEEL	CARBON STEEL	CARBON STEEL	CARBON STEEL	CARBON STEEL
30	PIN ²	12% CR	12% CR	12% CR	12% CR	17-4 PH
16c	NUTS	ASTM A194 GR 2H	ASTM A194 GR 2H	ASTM A194 GR 2H	ASTM A194 GR 2H	ASTM A194 GR 2H
59	GREASE FITTING	MFG. STD.	MFG. STD.	MFG. STD.	MFG. STD.	MFG. STD.
98	THREADED COL.	ASTM A193 GR B7	ASTM A193 GR B7	ASTM A193 GR B7	ASTM A193 GR B7	ASTM A193 GR B7
98a	BOLTING	ASTM A193 GR B7	ASTM A193 GR B7	ASTM A193 GR B7	ASTM A193 GR B7	ASTM A193 GR B7
98b	DRAW BOLTING	ASTM A193 GR B7	ASTM A193 GR B7	ASTM A193 GR B7	ASTM A193 GR B7	ASTM A193 GR B7
54	HANDWHEEL NUT	CARBON STEEL	CARBON STEEL	CARBON STEEL	CARBON STEEL	CARBON STEEL
128	TUBULAR COL.	CARBON STEEL	CARBON STEEL	CARBON STEEL	CARBON STEEL	CARBON STEEL

Pacific Valves® reserves the right to change or modify product design or construction without prior notice and without incurring any obligation to make such changes and modifications on products previously or subsequently sold.

NOTES:

1. A 309 SS inlay is standard in the gasket area of the body on ASME class 2500 valves. For this option on other pressure classes, specify special features suffix H.
2. Parallel Disc only.
3. WCC valve bonnets and internals will be manufactured with 300 series SS and/or 2 ¼ CR.
4. Thrust ring comes standard on 12" and larger ASME class 1500 and all sizes of ASME class 2500.

*Special high temperature packing is recommended for services over 850°F. Consult factory when ordering.

**High temperature packing is standard.

***Graphite Pressure Seal Bonnet Gasket standard. Mild Steel Silver Plated available on request.



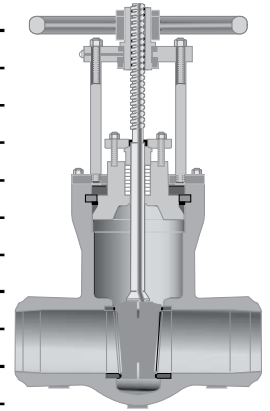
Dimensions Gate Valves • ASME Class 600

Fig. No. **55506-7-WE*** Flex Wedge, Butt Weld Ends
 Fig. No. **55506-7** Flex Wedge, Flanged Raised Face
 Fig. No. **55506-7-RJ** Flex Wedge, Flanged, Ring Joint

Fig. No. **55406-7-WE*** Parallel Seat Disc, Butt Weld Ends
 Fig. No. **55406-7** Parallel Seat Disc, Flanged, Raised Face
 Fig. No. **55406-7-RJ** Parallel Seat Disc, Flanged, Ring Joint

Dim	Description		VALVE SIZES (inches)										
			2	2.5	3	4	6	8	10	12	18	20	24
A	End-to-End Weld Ends	in.	8.50	8.50	10.00	12.00	18.00	23.00	28.00	32.00	43.00	47	55.00
		mm	216	216	254	305	458	585	712	813	1092	1194	1397
A ₁	Face-to-Face Flanged Ends	in.	N/A	N/A	14.00	17.00	22.00	26.00	31.00	33.00	43.00	47	55.00
		mm	N/A	N/A	356	432	559	661	788	839	1092	1194	1397
A ₂	Face-to-Face RTJ	in.	N/A	N/A	14.13	17.13	22.13	26.13	31.33	33.13	43.13	47.13	55.38
		mm	N/A	N/A	359	436	563	664	791	842	1096	1197	1407
K	Center-to-Top Open	in.	18.06	18.06	18.69	22.81	32.69	38.00	45.56	51.19	76.00	80.00	94.00
		mm	485	485	475	580	831	966	1158	1301	1930	2032	2388
M	Handwheel Dia.	in.	14	14	14	14	14	18	24	24	24	24	24
		mm	356	356	356	254	356	457	610	610	610	610	610
*	Weight Weld Ends	lbs.	78	78	80	123	312	588	995	1462	4000	5200	8300
		kg	36	36	37	56	141	265	448	658	1814	2359	3765
	Weight Flanged Ends	lbs.	125	125	131	213	511	903	1495	2157	4750	5900	9570
		kg	57	57	59	96	230	407	673	971	2155	2676	4340

NOTE:
 1. Valves are supplied with a handwheel actuator on all sizes.



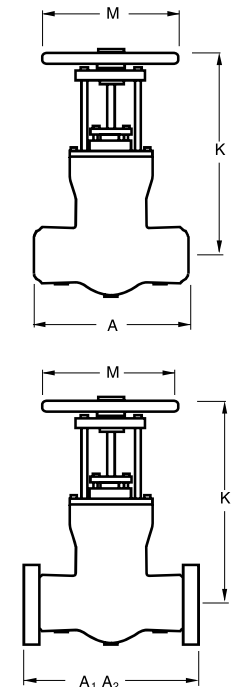
VENTURI GATE VALVES Fig. No. 55506-7-WE* Butt Weld Ends

Dim	Description		VALVE SIZES (inches)						
			8x6x8	10x8x10	12x10x12	14x12x14	20x18x20	24x20x24	26x24x26
A	End-to-End	in.	18	23	28	32	43.00	47	55.00
		mm	458	585	712	813	1092	1194	1397
K	Center-to-Top Open	in.	32.69	38.00	45.56	51.19	76.00	80	94.00
		mm	831	966	1158	1301	1930	2032	2388
M	Handwheel Dia.	in.	14	18	24	24	24	24	24
		mm	356	457	610	610	610	610	610
	Weight	lbs.	359	682	1124	1550	4200	6100	8700
		kg	163	309	510	703	1905	2767	3946

NOTES:
 1. Valves are supplied with a handwheel actuator on all sizes.

General Notes:

- Dimensions, weights, and other engineering data are subject to change or modification. This data is not to be used for construction unless confirmed by Pacific Valves®.
- All pressure seal gate valves are available with a solid wedge. Specify figure number 55006.
 * Specify pipe schedule.
- Related data available in Technical Data, Actuators, and Accessories sections.

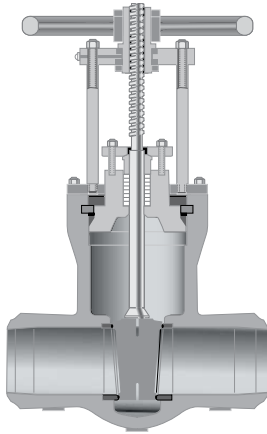




Dimensions Gate Valves • ASME Class 900

Fig. No. **55509-7-WE*** Flex Wedge, Butt Weld Ends
 Fig. No. **55509-7** Flex Wedge, Flanged Raised Face
 Fig. No. **55509-7-RJ** Flex Wedge, Flanged, Ring Joint

Fig. No. **55409-7-WE*** Parallel Seat Disc, Butt Weld Ends
 Fig. No. **55409-7** Parallel Seat Disc, Flanged, Raised Face
 Fig. No. **55409-7-RJ** Parallel Seat Disc, Flanged, Ring Joint

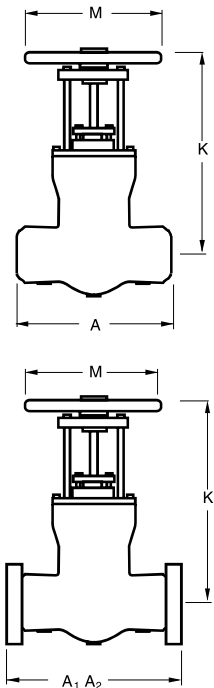


Dim	Description		VALVE SIZES (inches)												
			2	2.5	3	4	6	8	10	12	14	16	18	20	24
A	End-to-End Weld Ends	in.	8.5	10	12	14	20	26	31	36	39	43	48	52	61
		mm	216	254	305	356	508	660	787	914	991	1092	1219	1321	1549
A ₁	Face-to-Face Flanged Ends	in.	N/A	N/A	15	18	24	29	33	38	40.5	44.5	48	52	61
		mm	N/A	N/A	381	457	609	736	838	965	1028	1130	1219	1320	1549
A ₂	Face-to-Face RTJ	in.	N/A	N/A	15.13	18.13	24.13	29.13	33.13	38.13	40.88	44.88	48.5	52.5	61.75
		mm	N/A	N/A	384	460	612	740	841	968	1039	1140	1231	1333	1568
K	Center-to-Top Open	in.	17.25	17.25	19.06	22.44	32.25	37.31	45.13	51.06	59.00	69.00	75.00	81.00	91.00
		mm	438	438	485	570	820	948	1147	1297	1499	1758	1911	2044	2311
M	Handwheel Dia.	in.	14	14	14	14	18	24	28	34	34	30	30	30	20
		mm	356	356	356	254	457	609	711	863	863	762	762	762	508
**	Weight Weld Ends	lbs	63	63	84	129	328	619	1048	1539	2177	3066	4600	5369	8603
		kg	29	29	38	59	148	279	472	693	987	1390	2086	2434	3901
**	Weight Flanged Ends	lbs	N/A	N/A	137	224	537	930	1559	2250	3180	4300	6400	7500	12600
		kg	N/A	N/A	62	101	243	419	702	1013	1442	1950	2902	3401	5714

NOTE:

1. Valves are supplied with a handwheel actuator through 14". Bevel gear supplied on 16"-24".

VENTURI GATE VALVES Fig. No. 55509-7-WE* Butt Weld Ends



Dim	Description		VALVE SIZES (inches)								
			8x6x8	10x8x10	12x10x12	14x12x14	16x14x16	18x16x18	20x18x20	22x20x22	26x24x26
A	End-to-End	in.	20	26	31	36	39	43	48	52	61
		mm	508	660	787	914	991	1092	1219	1321	1549
K	Center-to-Top Open	in.	32.25	37.31	45.13	51.06	59	69	75	81	91
		mm	820	948	1147	1297	1499	1651	1778	2044	2311
M	Handwheel Dia.	in.	18	24	28	34	34	30	30	30	20
		mm	457	609	711	863	863	762	762	762	508
**	Weight	lbs	340	642	1083	1586	2238	3140	4700	5500	8750
		kg	153	289	488	714	1008	1413	2115	2475	3938

NOTES:

1. Valves are supplied with a handwheel actuator through 16" x 14" x 16". Bevel gear supplied on 18" x 16" x 18" and larger.

General Notes:

1. Dimensions, weights, and other engineering data are subject to change or modification. This data is not to be used for construction unless confirmed by Pacific Valves®.

2. All pressure seal gate valves are available with a solid wedge. Specify figure number 55009.

* Specify pipe schedule.

**Weight includes standard bevel gear where applicable (see note 1 above).

3. Related data available in Technical Data, Actuators, and Accessories sections.

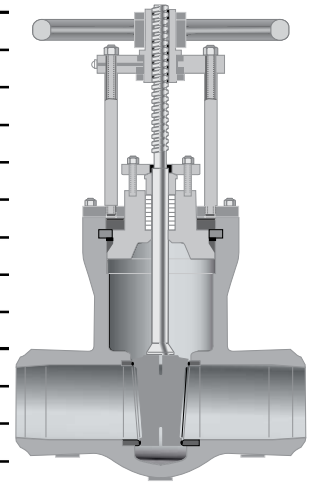


Dimensions Gate Valves • ASME Class 1500

Fig. No. **55515-7-WE*** Flex Wedge, Butt Weld Ends
 Fig. No. **55515-7** Flex Wedge, Flanged Raised Face
 Fig. No. **55515-7-RJ** Flex Wedge, Flanged, Ring Joint

Fig. No. **55415-7-WE*** Parallel Seat Disc, Butt Weld Ends
 Fig. No. **55415-7** Parallel Seat Disc, Flanged, Raised Face
 Fig. No. **55415-7-RJ** Parallel Seat Disc, Flanged, Ring Joint

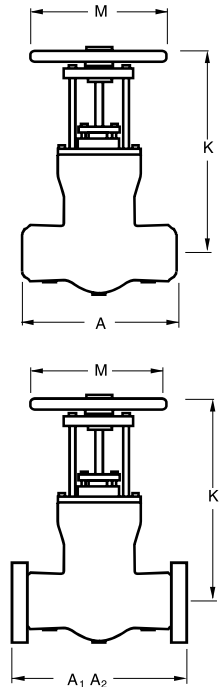
Dim	Description	VALVE SIZES (inches)													
		2	2.5	3	4	6	8	10	12	14	16	18	20	24	
A	End-to-End Weld Ends	in.	8.5	10	12	16	22	28	34	39	42	47	53	58	60
		mm	216	254	305	406	559	711	864	991	1067	1194	1346	1473	1943
A ₁	Face-to-Face Flanged Ends	in.	16.5	16.5	18.5	21.5	27.75	32.75	39	44.5	49.5	54.5	60.5	65.5	76.5
		mm	419	419	470	546	705	831	990	1130	1257	1384	1536	1663	1943
A ₂	Face-to-Face RTJ	in.	16.63	16.63	18.63	21.63	28	33.13	39.38	45.13	50.25	55.38	61.38	66.38	77.63
		mm	422	422	473	549	711	841	1000	1146	1276	1406	1559	1685	1972
K	Center-to-Top Open	in.	17.25	17.25	21.00	24.75	33.00	36.75	44.50	50.63	67	74	77	90	98
		mm	438	438	533	629	837	933	1130	1286	1695	1880	1962	2286	2489
M	Handwheel Dia.	in.	14	14	14	14	24	24	24	24	30	30	30	30	30
		mm	356	356	356	254	610	610	610	610	762	762	762	762	762
**	Weight Weld Ends	lbs	63	63	110	200	524	905	1880	2536	3226	4211	5453	6322	9450
		kg	29	29	50	90	236	408	846	1142	1452	1909	2454	2867	4286
**	Weight Flanged Ends	lbs	130	130	181	322	751	1330	2242	3610	4954	6516	8520	10157	14175
		kg	59	59	82	145	338	599	1009	1625	2246	2955	3863	4606	6430



NOTE:
 1. Valves are supplied with a handwheel actuator through 12". Bevel gear supplied on 14"-24".

VENTURI GATE VALVES Fig. No. 55515-7-WE* Butt Weld Ends

Dim	Description	VALVE SIZES (inches)								
		8x6x8	10x8x10	12x10x12	14x12x14	16x14x16	18x16x18	20x18x20	22x20x22	
A	End-to-End	in.	22	28	34	39	42	47	53	58
		mm	559	711	864	991	1067	1194	1346	1473
K	Center-to-Top Open	in.	33	36.75	44.50	50.63	67	74	77	90
		mm	837	933	1130	1286	1689	1880	1962	2286
M	Handwheel Dia.	in.	24	34	34	34	30	20	20	20
		mm	609	863	863	863	762	508	508	508
**	Weight	lbs	545	938	1943	2615	3316	4316	5573	6500
		kg	246	423	875	1177	1493	1943	2508	2948



NOTES:
 1. Valves are supplied with a handwheel actuator through 14" x 12" x 14". Bevel gear supplied on 16" x 14" x 16" and larger.

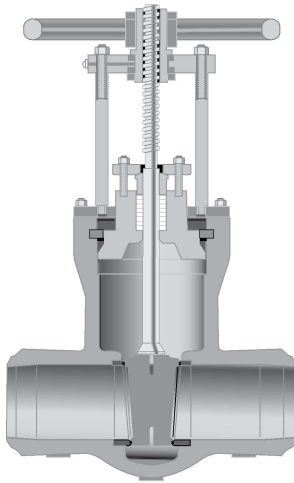
- General Notes:**
- Dimensions, weights, and other engineering data are subject to change or modification. This data is not to be used for construction unless confirmed by Pacific Valves®.
 - All pressure seal gate valves are available with a solid wedge. Specify figure number 55015.
 * Specify pipe schedule.
 **Weight includes standard bevel gear where applicable (see note 1 above).
 - Related data available in Technical Data, Actuators, and Accessories sections.



Dimensions Gate Valves • ASME Class 2500

Fig. No. **55525H-7-WE*** Flex Wedge, Butt Weld Ends
 Fig. No. **55525H-7** Flex Wedge, Flanged Raised Face
 Fig. No. **55525H-7-RJ** Flex Wedge, Flanged, Ring Joint

Fig. No. **55425H-7-WE*** Parallel Seat Disc, Butt Weld Ends
 Fig. No. **55425H-7** Parallel Seat Disc, Flanged, Raised Face
 Fig. No. **55425H-7-RJ** Parallel Seat Disc, Flanged, Ring Joint

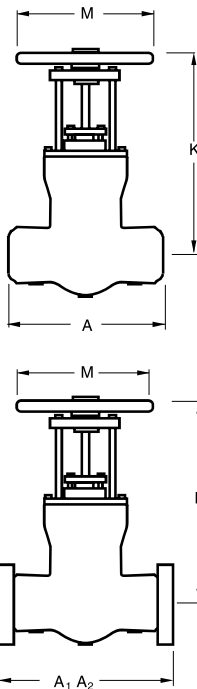


Dim	Description		VALVE SIZES (inches)												
			2	2.5	3	4	6	8	10	12	14	16	18	20	24
A	End-to-End Weld Ends	in.	14.5	13	14.5	18	24	30	36	41	44	49	55	62	66
		mm	368	330	368	457	609	762	914	1041	1117	1244	1397	1574	1676
A ₁	Face-to-Face Flanged Ends	in.	22.75	22.75	22.75	26.5	36	40.25	50	56	(2)	(2)	(2)	(2)	(2)
		mm	577	577	577	673	914	1028	1270	1422	(2)	(2)	(2)	(2)	(2)
A ₂	Face-to-Face RTJ	in.	23	23	23	26.88	36.5	40.88	50.88	56.88	(2)	(2)	(2)	(2)	(2)
		mm	584	584	584	683	957	1039	1293	1445	(2)	(2)	(2)	(2)	(2)
K	Center-to-Top Open	in.	22.00	22.00	22.00	25.88	32.50	37.50	40.75	56.00	72	81	89	97	115
		mm	559	559	559	658	826	953	1036	1423	1829	2057	2260	2464	2921
M	Handwheel Dia.	in.	14	14	14	18	24	24	24	30	30	30	30	30	30
		mm	356	356	254	457	610	610	610	762	762	762	762	762	762
**	Weight Weld Ends	lbs	268	268	268	304	805	1205	2113	3053	4107	5482	7653	10162	15900
		kg	121	121	121	137	363	543	951	1374	1862	2486	3470	4608	7210
**	Weight Flanged Ends	lbs	428	428	428	532	1425	2090	4038	5890	(2)	(2)	(2)	(2)	(2)
		kg	193	193	193	240	642	941	1818	2651	(2)	(2)	(2)	(2)	(2)

NOTES:

- Valves are supplied with a handwheel actuator on sizes 2½" - 10". Bevel gear supplied on 12" - 24".
- For flanged end data on 14" - 24"— contact Pacific Valves®.

VENTURI GATE VALVES Fig. No. 55525H-7-WE* Butt Weld Ends



Dim	Description		VALVE SIZES (inches)						
			8x6x8	10x8x10	12x10x12	14x12x14	16x14x16	18x16x18	20x18x20
A	End-to-End	in.	24	30	36	41	44	49	55
		mm	610	762	914	1041	1118	1245	1397
K	Center-to-Top Open	in.	32.50	37.50	40.75	56.00	72	81	89
		mm	826	953	1036	1423	1829	2057	2261
M	Handwheel Dia.	in.	24	34	34	30	20	20	24
		mm	609	863	863	762	508	508	609
**	Weight	lbs	837	1250	2185	3148	4222	5620	7760
		kg	377	563	984	1417	1900	2529	3527

NOTES:

- Valves are supplied with a handwheel actuator through 12". Bevel gear supplied on 14" x 12" x 24" and larger.

General Notes:

- Dimensions, weights, and other engineering data are subject to change or modification. This data is not to be used for construction unless confirmed by Pacific Valves®.
- All pressure seal gate valves are available with a solid wedge. Specify figure number 55025.
* Specify pipe schedule.
**Weight includes standard bevel gear where applicable (see note 1 above).
- Related data available in Technical Data, Actuators, and Accessories sections.