

Flanged (Rotating)

Rotating Flanges

150# and 300#

Commonly Selected Retainer Choices

316 Stainless Steel
Teflon® Encapsulated
 Flared Thru
 Monel®
 Hastelloy®
 and more

Flange Option: 150# and 300#

See page 38



Ductile Iron



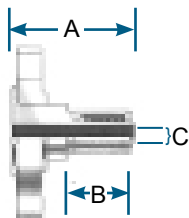
Stainless



Plastic



Epoxy Coated
Carbon Steel



Flange & Retainer				
Size	A	B	C	C Encapsulated Retainer
1/2"	3.066	1.618	.38	N/A
3/4"	3.186	1.618	.42	.485
1"	3.346	1.718	.99	.550
1-1/2"	3.725	1.967	1.28	.435
2"	4.128	2.250	1.75	1.44
3"	5.618	3.400	3.07	N/A
4"	6.218	3.625	4.03	

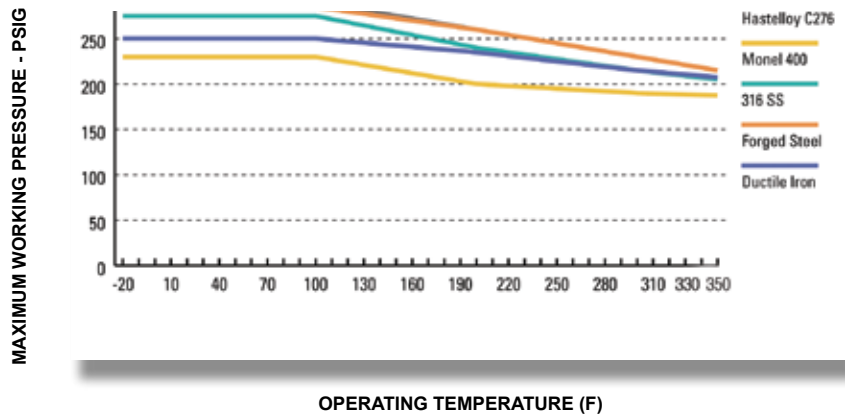


Standard retainer
Style # 30

Teflon® PFA encapsulated:
Style # 30 E or 30 A
Injection molded *Teflon*® PFA over entire hose shank and throughout wetted areas of fitting

Teflon® PTFE Flared Thru:
Style # 35
Hose liner extends through the retainer and is flared over the face

150# FLANGE PRESSURE RATINGS



300# FLANGE PRESSURE RATINGS

