

Dimensions 200 CWP • Y-Pattern • Threaded Cap

Figure 49

Check Valve, Threaded Ends

Size Range:

½ through 2 inches

Design Features:

- Integral Seat
- Y Pattern
- MSS SP-42
- ASME B16.34

Dimensions and Weights

Valve Size	Weight (lbs)	Dimensions (inches)	
		A	B
½	0.7	2.56	1.8
¾	1.1	3.15	2.0
1	1.5	3.54	2.4
1½	3.1	4.72	3.2
2	4.6	5.51	3.7

Please refer to page 28 for Pressure-Temperature Ratings.

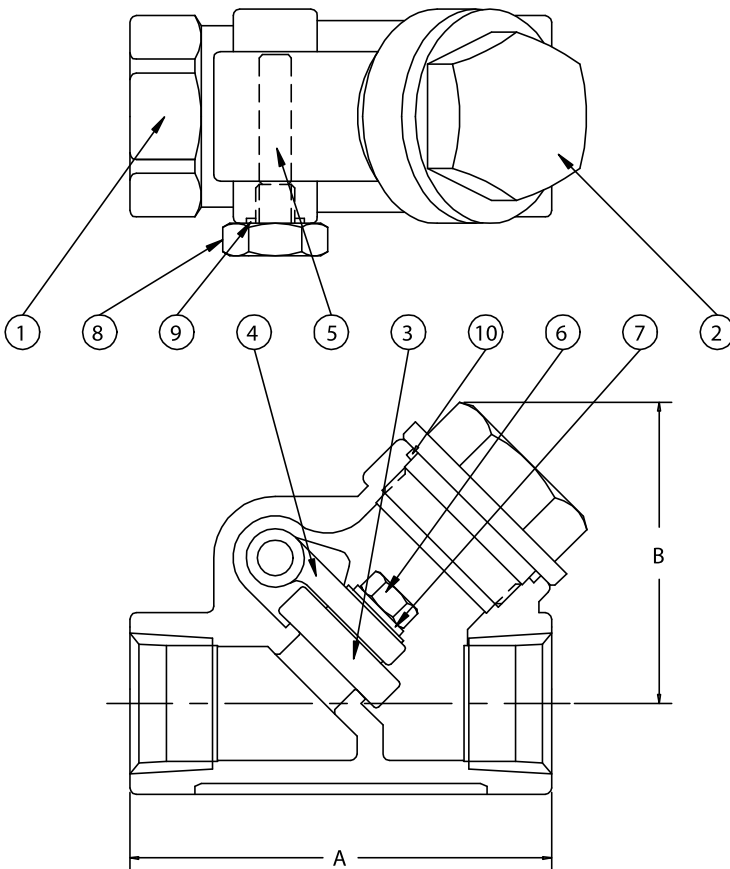


Fig. 49

Materials of Construction

1	Body	ASTM A351 CF8M
2	Cap	ASTM A351 CF8M
3	Disc	ASTM A351 CF8M
4	Hinge Arm	ASTM A351 CF8M
5	Hinge Pin	316 SS
6	Disc Nut	316 SS
7	Disc Washer	316 SS
8	Plug	316 SS
9	Seal	PTFE
10	Gasket	PTFE

Dimensions Class 150 • Bolted Cover

Figure 370

Check Valve, Threaded Ends

Figure 374

Check Valve, Socket Weld Ends

Size Range:

½ through 2 inches

Design Features:

- Integral Seat
- Recessed Retained Gasket
- MSS SP-42
- ASME B16.34

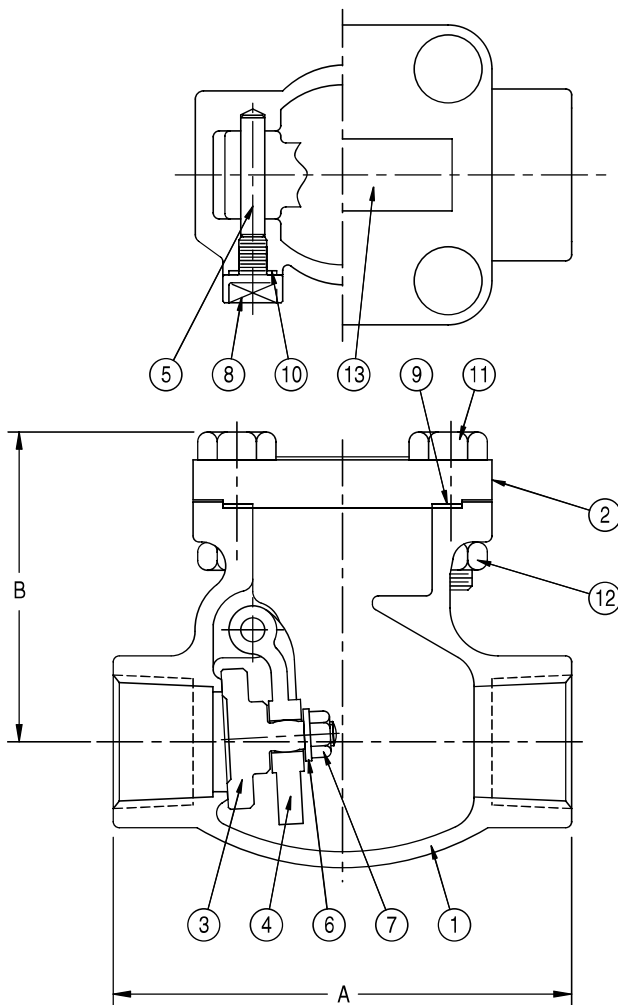


Fig. 370

Dimensions and Weights

Valve Size	Weight (lbs)	Dimensions (inches)		
		A	B (open)	C*
½	3.5	3.35	2.4	.38
¾	3.7	3.74	2.8	.50
1	5.5	4.53	3.1	.50
1 ½	8.6	4.92	4.1	.50
2	10.3	5.91	4.6	.62

* For Figure 374 only - socket weld depth

Please refer to page 28 for Pressure-Temperature Ratings.

Industry Standards

Pipe Threads	ASME B1.20.1
Wall Section	ASME B16.34
Socket Weld Ends	ASME B16.11
End-to-End	Manufacturer's Standard
Pressure Temp. Ratings	ASME B16.34
Testing	API 598

Materials of Construction

1	Body	ASTM A351 CF3M
2	Cover	ASTM A351 CF8M
3	Disc	ASTM A351 CF8M
4	Hinge Arm	ASTM A351 CF8M
5	Hinge Pin	ASTM A276 T316
6	Disc Washer	ASTM A276 T316
7	Disc Nut	ASTM A194 GR 8M
8	Plug	ASTM A276 T316
9	Gasket	PTFE
10	Plug Seal	PTFE
11	Cover Bolt	ASTM A193 GR B8
12	Cover Bolt Nut	ASTM A194 GR 8
13	ID Tag	ASTM A276 T304



Dimensions Class 150 • Bolted Cover

Figure 377

Check Valve, Raised Face, Flanged Ends

Size Range:

½ through 12 inches

Design Features:

- Integral Seat
- Recessed Retained Gasket
- MSS SP-42
- ASME B16.34

Dimensions and Weights

Valve Size	Weight (lbs)	Dimensions (inches)	
		L	H
½	4.2	4.25	2.6
¾	5.6	4.61	2.8
1	8.4	5.00	5.0
1 ½	13.5	6.50	3.8
2	20.4	8.00	4.3
2 ½	50.7	8.50	6.2
3	57.3	9.50	6.5
4	99.2	11.50	8.6
5	N/A	13.00	13.8
6	172.0	14.00	16.0
8	299.9	19.50	18.3
10	471.9	24.50	21.2
12	707.8	27.50	19.0

Please refer to page 28 for Pressure-Temperature Ratings.

Industry Standards

End Flanges	ASME B16.5
Wall Section	ASME B16.34
Face-to-Face	ASME B16.10
Pressure-Temp Ratings	ASME B16.34
Testing	API 598

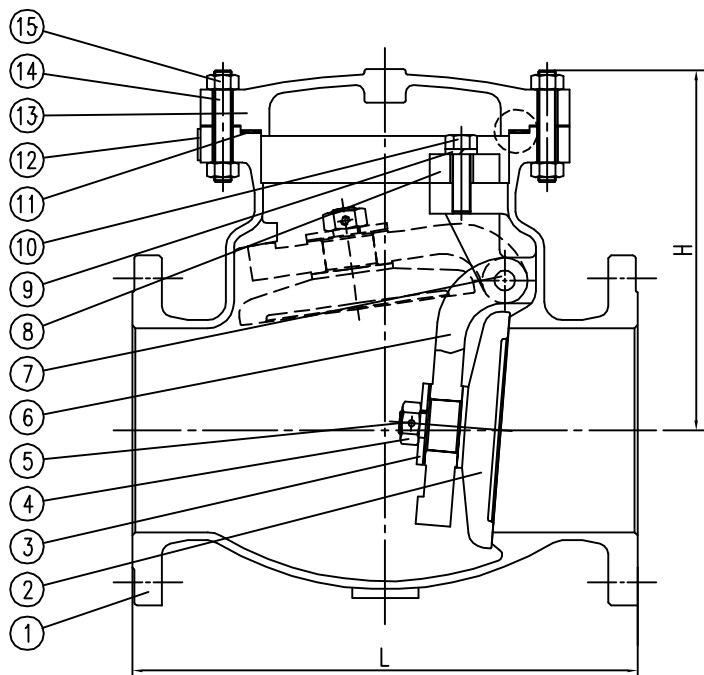


Fig. 377

Materials of Construction

1	Body	ASTM A351 CF8M
2	Disc	ASTM A351 CF8M
3	Hinge	ASTM A276 316
4	Nut	ASTM A194 GR 8M
5	Pin	ASTM A276 316
6	Hinge	ASTM A351 CF8M
7	Hinge Pin	ASTM A276 316
8	Yoke	ASTM A351 CF8M
9	Spring Gasket	ASTM A276 316
10	Bolt	ASTM A193 GR B8
11	Gasket	PTFE
12	Name Plate	ASTM A276 304
13	Bonnet	ASTM A351 CF8M
14	Bolt	ASTM A193 GR B8
15	Nut	ASTM A194 GR 8

Dimensions Class 300 • Bolted Cover

Figure 2370

Check Valve, Threaded Ends

Figure 2374

Check Valve, Socket Weld Ends

Size Range:

½ through 2 inches

Design Features:

- Integral Seat
- Recessed Retained Gasket
- MSS SP-42
- ASME B16.34

Dimensions and Weights

Valve Size	Weight (lbs)	Dimensions (inches)	
		A	B
½	4.2	3.23	3.3
¾	4.2	3.23	3.3
1	5.8	4.13	3.4
1 ½	10.1	4.92	3.9
2	13.1	5.31	4.1

Please refer to page 28 for Pressure-Temperature Ratings.

Industry Standards

Pipe Threads	ASME B1.20.1
Wall Section	ASME B16.34
Socket Weld Ends	ASME B16.11
End-to-End	Manufacturer's Standard
Pressure Temp. Ratings	ASME B16.34
Testing	API 598

Materials of Construction

1	Body	ASTM A351 CF3M
2	Cover	ASTM A351 CF8M
3	Disc	ASTM A351 CF8M
4	Hinge Arm	ASTM A351 CF8M
5	Hinge Pin	ASTM A276 T316
6	Disc Washer	ASTM A276 T316
7	Disc Nut	ASTM A194 GR 8M
8	Gasket	PTFE
9	Cover Bolt	ASTM A193 GR B8
10	Cover Bolt Nut	ASTM A194 GR 8
11	ID Tag	ASTM A276 T304

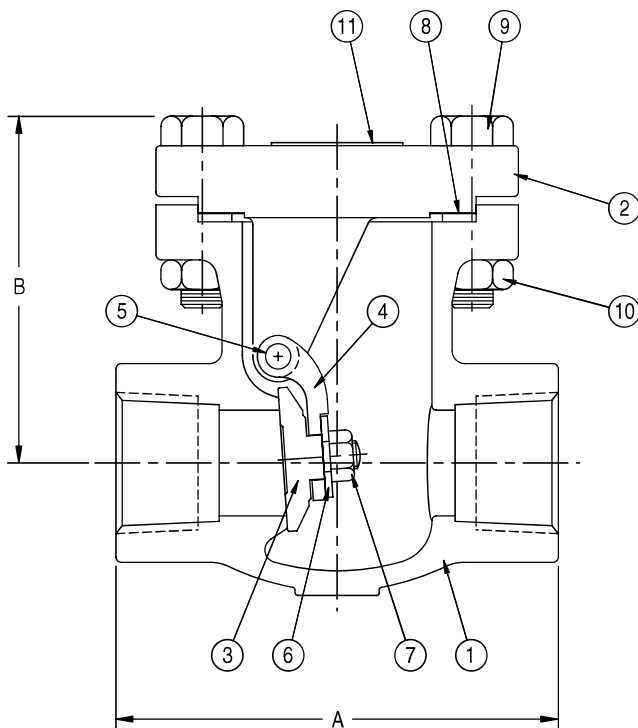
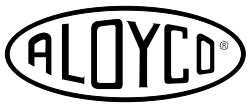


Fig. 2370



Dimensions Class 300 • Bolted Cover

Figure 2377

Check Valve, Raised Face, Flanged Ends

Size Range:

½ through 12 inches

Design Features:

- Integral Seat
- Recessed Retained Gasket
- MSS SP-42
- ASME B16.34

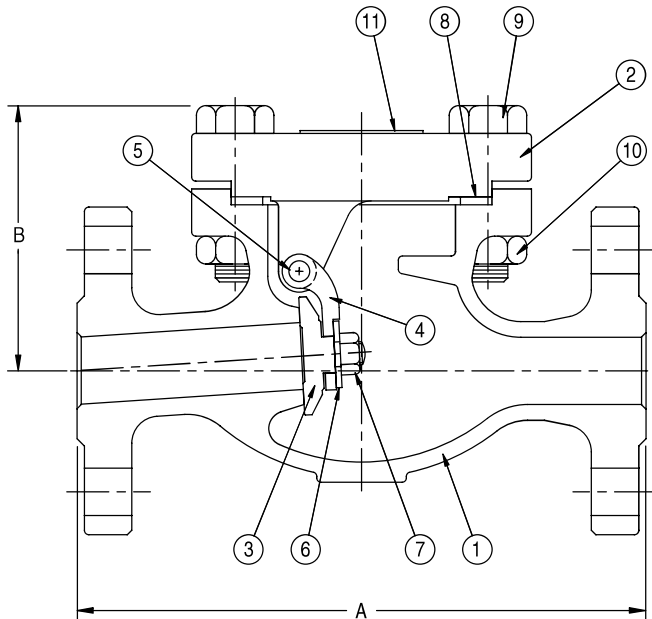


Fig. 2377

Dimensions and Weights

Valve Size	Weight (lbs)	Dimensions (inches)	
		A	B
½	8.5	6.00	3.4
¾	11	7.00	3.6
1	16.5	8.50	4.0
1 ½	27.8	9.50	6.2
2	34.4	10.50	6.8
2 ½	81.6	11.50	8.9
3	92.6	12.50	13.8
4	141.1	14.00	16.0
6	273.4	17.50	18.3
8	489.5	21.00	21.2
10	643.9	24.50	14.0
12	979.0	28.00	15.5

Please refer to page 28 for Pressure-Temperature Ratings.

Industry Standards

End Flanges	ASME B16.5
Wall Section	ASME B16.34
Face-to-Face	ASME B16.10
Pressure-Temp. Ratings	ASME B16.34
Testing	API 598

Materials of Construction

1	Body	ASTM A351 CF8M
2	Cover	ASTM A351 CF8M
3	Disc	ASTM A351 CF8M
4	Hinge Arm	ASTM A351 CF8M
5	Hinge Pin	ASTM A276 T316
6	Disc Washer	ASTM A276 T316
7	Disc Nut	ASTM A194 GR 8M
8	Gasket	PTFE
9	Cover Bolt	ASTM A193 GR B8
10	Cover Bolt Nut	ASTM A194 GR 8
11	ID Tag	ASTM A276 T304

Dimensions Class 600 • Bolted Cover

Figure 4370

Check Valve, Threaded Ends

Figure 4374

Check Valve, Socket Weld Ends

Size Range:

½ through 2 inches

Design Features:

- Integral Seat
- Recessed Retained Gasket
- MSS SP-42
- ASME B16.34

Dimensions and Weights

Valve Size	Weight (lbs)	Dimensions (inches)	
		A	B
½	4.2	3.23	3.3
¾	4.2	3.23	3.3
1	5.8	4.13	3.4
1 ½	10.1	4.92	3.9
2	13.1	5.31	4.1

Please refer to page 28 for Pressure-Temperature Ratings.

Industry Standards

Pipe Threads	ASME B1.20.1
Wall Section	ASME B16.34
Socket Weld Ends	ASME B16.11
End-to-End	Manufacturer's Standard
Pressure Temp. Ratings	ASME B16.34
Testing	API 598

Materials of Construction

1	Body	ASTM A351 CF3M
2	Cover	ASTM A351 CF8M
3	Disc	ASTM A351 CF8M
4	Hinge Arm	ASTM A351 CF8M
5	Hinge Pin	ASTM A276 T316
6	Disc Washer	ASTM A276 T316
7	Disc Nut	ASTM A194 GR 8M
8	Gasket	PTFE
9	Cover Bolt	ASTM A193 GR B8
10	Cover Bolt Nut	ASTM A194 GR 8
11	ID Tag	ASTM A276 T304

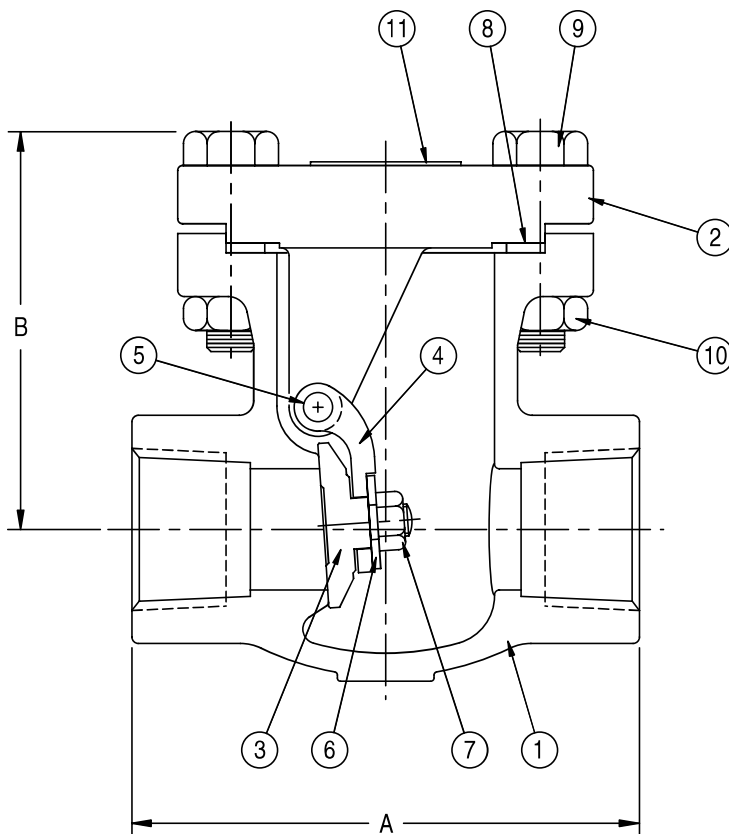
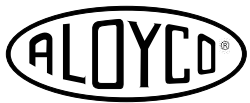


Fig. 4370



Dimensions Class 600 • Bolted Cover

Figure 4377

Check Valve, Raised Face, Flanged Ends

Size Range:

2½ through 12 inches

Design Features:

- Integral Seat
- Ring Type Joint Bonnet Gasket
- MSS SP-42
- ASME B16.34

Dimensions and Weights

Valve Size	Weight (lbs)	Dimensions (inches)	
		L	H
2 ½	108.0	13.00	7.9
3	123.5	14.00	9.0
4	227.1	17.00	11.8
6	449.8	22.00	14.7
8	754.1	26.00	17.7
10	1375.9	31.00	18.0
12	1711.1	33.00	23.0

Please refer to page 28 for Pressure-Temperature Ratings.

Industry Standards

End Flanges	ASME B16.5
Wall Section	ASME B16.34
Face-to-Face	ASME B16.10
Pressure-Temp. Ratings	ASME B16.34
Testing	API 598

Materials of Construction

1	Body	ASTM A351 CF8M
2	Disc	ASTM A351 CF8M
3	Hinge	ASTM A276 T304/316
4	Nut	ASTM A193 GR B8M
5	Pin	ASTM A276 T304/316
6	Hinge	ASTM A351 CF8M
7	Hinge Pin	ASTM A276 T304/316
8	Yoke	ASTM A351 CF8M
9	Spring Gasket	ASTM A276 T304/316
10	Bolt	ASTM A193 GR B8M
11	Ring Type Joint Gasket	ASTM A276 T304/316
12	Bonnet	ASTM A351 CF8M
13	ID Tag	ASTM A276 T304
14	Bolt	ASTM A193 GR B8M
15	Nut	ASTM A194 GR 8
16	Bolt	Steel

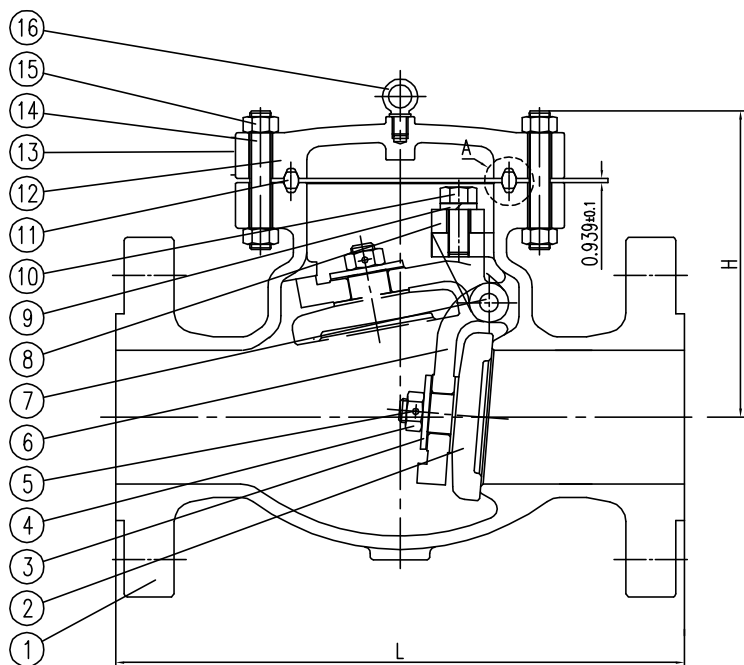


Fig. 4377