

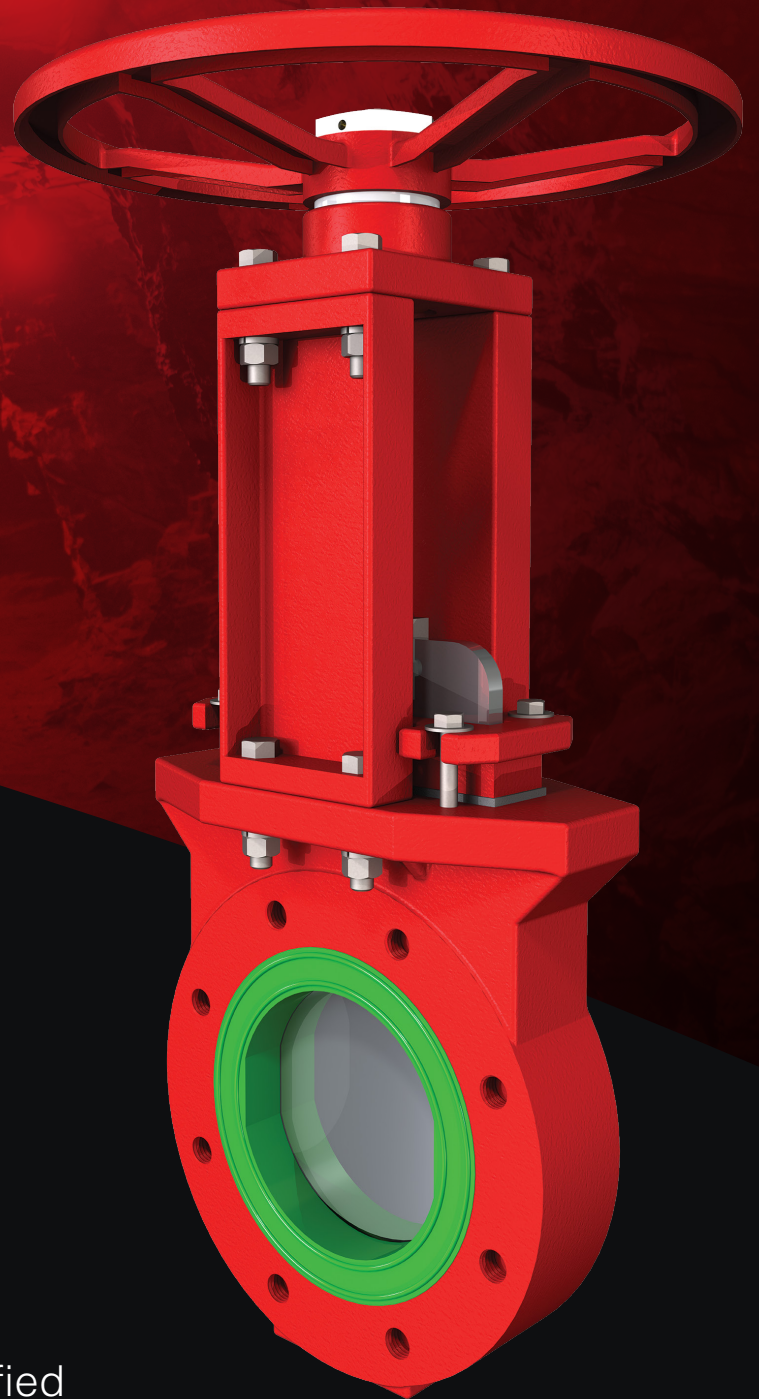
Elite Valve

elitevalve.com

Customized
valve solutions
for the toughest
of applications

E5900 Urethane Lined Knife Gate Valve

Sizes: 2" to 24" | ISO.9001 Certified



E5900 Urethane Lined Knife Gate Valve

The E5900 Urethane Lined KGV is fully lined with molded high-quality urethane, which far exceeds the wear life of gum rubber and other softer sleeve materials, along with a hard chrome plated gate makes the E5900 the perfect valve for erosive fine particle applications.

Standard Design Features

- Sizes available: 2"–24" (larger sizes available upon request)
- Handwheel operator standard 2"–12"
- Bevel gear operator standard 14" and above
- Cast ductile iron powder coated body
- 304ss stem
- 304ss thick chrome coated polished gate
- Replaceable urethane liner cartridge
- Self flushing beveled gate seal
- Fabricated powder coated steel yoke with ISO 5211 mounting patterns for various actuation packages
- Designed to MSS SP-85 dimensions
- ASME B16.5 Class 150 flange bolt pattern
- Rated to 150psi (other pressure ratings available upon request)

Available Options

- Higher alloy gates and coatings available upon request
- Variety of liners available
- Lockout pin
- Proximity switches
- Actuators include handwheel, bevel gear, pneumatic/ hydraulic cylinder, electric, etc.

