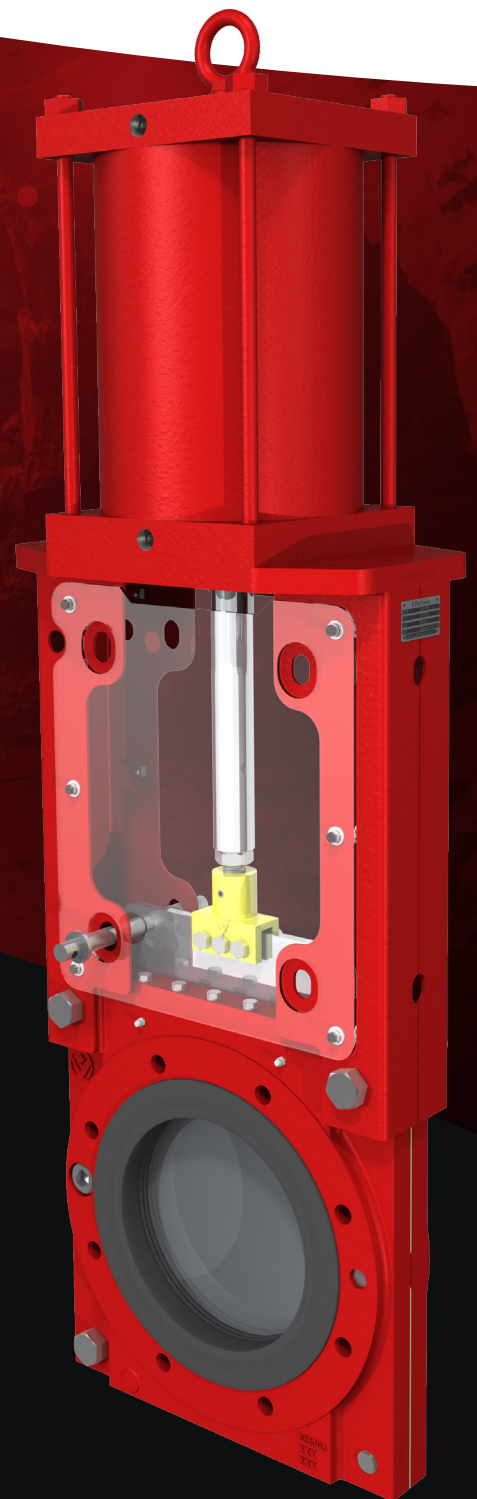


Elite Valve

elitevalve.com

Customized
valve solutions
for the toughest
of applications



E5300 Heavy Slurry Knife Gate Valve

Sizes: 2" to 24" | ISO.9001 Certified

E5300 Heavy Slurry Knife Gate Valve

The E5300 Heavy Slurry KGV is designed for mining of all material and gemstone related applications including services that include rocks, heavy slurries, coarse powders and other abrasive materials. It is ideal for any rubber lined piping system.

Standard Design Features

- Sizes available: 2"–24" stock (larger sizes available upon request)
- Handwheel operator standard 2"–12"
- Bevel gear operator standard 14" and above
- Powder coated body, WCB sizes 2"–12", DI sizes 14" and above
- 304ss rolled ACME stem
- 316ss polished bevel gate
- Reinforced natural rubber seat and lubricating wiper
- Fabricated powder coated steel yoke with ISO 5211 mounting patterns for various actuation packages
- Open/closed lockout pin and acrylic dust cover
- Designed to MSS SP-135 dimensions
- ASME B16.5 Class 150 flange bolt pattern
- 2"–16" seats rated to 200psi, 18" and above rated to 90psi

Available Options

- Gates stocked in hardened 410ss (higher alloys available upon request)
- Gate coatings available in Xylan 1070, hard chrome, stellite etc...
- O-Port (through conduit gate) with safety screen
- Seats available in BUNA-N, HNBR, urethane etc...
- Drain plate with flushing ports
- Proximity switches
- Stem boot
- Actuators include handwheel, bevel gear, pneumatic/hydraulic cylinder, electric etc...

