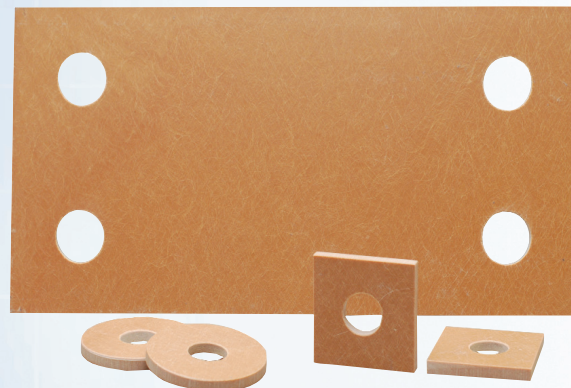


Thermal Insulation Material



Thermal insulation material (TIM) is manufactured from a fiberglass-reinforced laminate composite. The properties of this material provide a thermally efficient, energy-saving product that prevents thermal bridging in structural connections. TIM is a load bearing "thermal break" used between flanged steel connections. The primary benefit is that it maintains structural integrity while reducing heat loss.



*Color may vary.

TIM material is supplied in sheets or cut to size per customer drawings/specifications and is available in thicknesses of 1/4", 1/2" and 1". It is also supplied as thermal break washers for the bolted connections between external and internal steelwork.

Features and Attributes

- Thermally efficient, energy-saving construction
- Eliminates potential condensation and mold
- High load capacity maintains structural integrity
- Low thermal conductivity reduces heat loss

NGC

PRODUCT SOLUTIONS INC.

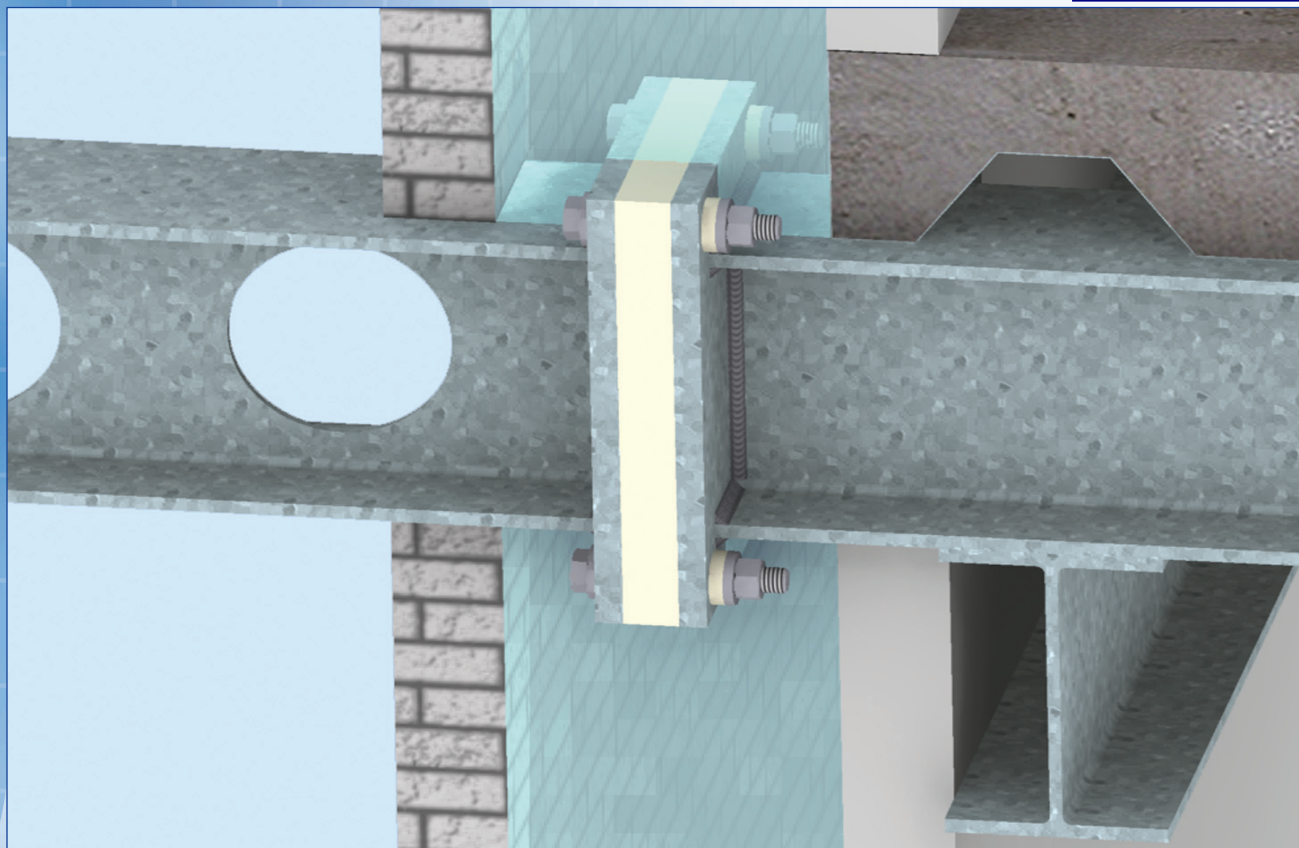
110, 3160 118 Avenue SE
Calgary, AB T2Z 3X1

TOLL FREE: 888 770 8899

MAIN: 403 295 3114

EMAIL: ngcsales@ngc-ps.com

WEB: ngc-ps.com



Properties of Fabreeka's Thermal Insulation Material

Mechanical Properties

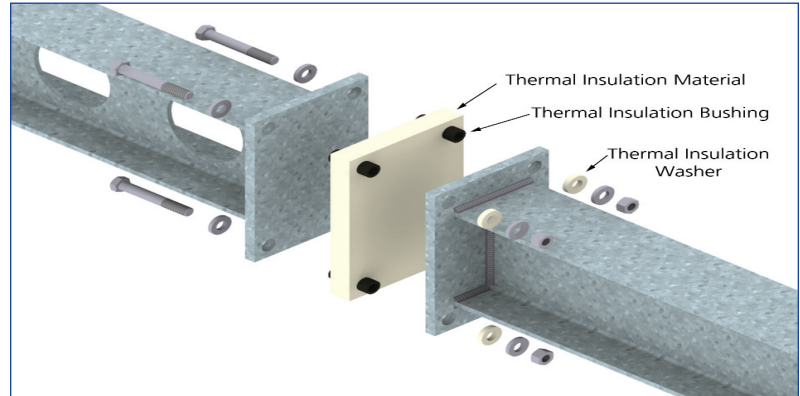
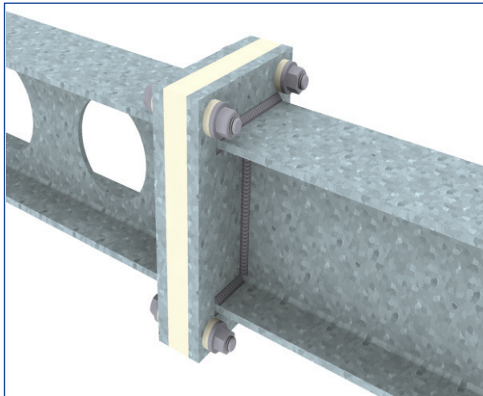
Tensile Strength	PSI	ASTM D638	9,400
Flexural Strength	PSI	ASTM D790	22,300
Compressive Strength	PSI	ASTM D695	38,900
Compressive Modulus	PSI	ASTM D695	1,450,377
Shear Strength	PSI	ASTM D732	13,400
Thickness	in	-	1/4", 1/2", 1"

Flame Resistance

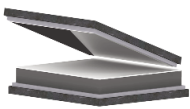
Oxygen Index	%O ₂	ASTM D2863	21.8
--------------	-----------------	------------	------

Thermal Properties

Coefficient of Thermal Expansion	in/in/°C x 10 ⁻⁵	ASTM D696	2.2
Thermal Conductivity	BTU/Hr/ft ² /in/°F W/m*K	ASTM C177	1.8** 0.259
**Reference: Thermal Conductivity of Steel	BTU/Hr/ft ² /in/°F W/m*K		374.5 54.0



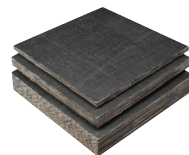
Additional Products for Building & Construction



Expansion Bearings



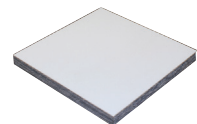
SA-47 Bearing Pads



Fabreeka Bearing Pads



Isolation Washers & Bushings



PTFE Bearing Pads

World Headquarters

Fabreeka International, Inc.

PO Box 210
1023 Turnpike Street
Stoughton, MA 02072
Tel: (800) 322-7352
Tel: (781) 341-3655
Fax: (781) 341-3983
E-mail: info@fabreeka.com
www.fabreeka.com

Canada

Fabreeka Canada Ltd

Tel: (800) 322-7352
Fax: (781) 341-3983
E-mail: info@fabreeka.com
www.fabreeka.ca

Germany

Fabreeka GmbH Deutschland

Hessenring 13
D-64572 Büttelborn
Tel: 49 - (0)6152-9597-0
Fax: 49 - (0)6152-9597-40
E-mail: info@fabreeka.de
www.fabreeka.de

England

Fabreeka International, Inc.

8 - 12 Jubilee Way
Thackley Old Road, Shipley
West Yorkshire BD18 1QG
Tel: 44 - (0)1274 531333
Fax: 44 - (0)1274 531717
E-mail: info@fabreeka-uk.com
www.fabreeka.co.uk

Taiwan

Fabreeka International, Inc.

PO Box 1246
Tainan 70499
Taiwan
Tel: 886-935 273732
E-mail: info@fabreeka.tw
www.fabreeka.com.cn