

Fabreeka® Bearing Pads



Fabreeka® bearing pads are constructed of multiple laminations (plies) of lightweight cotton-polyester duck which is impregnated with elastomers containing anti-oxidants and mildew inhibitors. These impregnated plies are then laid up, prestressed, vulcanized, and cured under pressure to produce a Fabreeka® pad of desired thickness.



Fabreeka® Bearing Pads absorb shock and vibration under heavy loads where conditions are severe.

Features - Attributes - Qualities

- ◆ Since 1934, the Fabreeka® pad has exhibited excellent durability as attested to by service as a bridge bearing pad. It has been subjected to and survived (per environmental test MIL-E-5272) moisture, sunshine, salt spray, fungus and dust.
- ◆ Achieves effective performance in environments where temperatures range from extremes of -65°F to 200°F.
- ◆ Is impervious to oils commonly found in industrial applications and is resistant to the effects of steam, water, mildew and brine.
- ◆ Can accommodate surface irregularity and angularity due to rotation between bearing faces. Prevents the flaking and powdering of concrete surfaces due to uneven load distribution and is abrasion resistant.
- ◆ Hi-Load (2000 psi maximum) capability, thus minimizing the pad size and space requirements with only 6% creep at maximum loading.
- ◆ Provides excellent shock absorption and vibration isolation with high damping value.
- ◆ Is frequently surfaced with a PTFE resin to facilitate the sliding capability of Fabreeka's® complete line of SBX slide expansion bearings.
- ◆ Meets MIL-C-882, AASHTO, P.C.I., and D.O.T. "Preformed Fabric Pad" specification requirements.
- ◆ Prompt availability to erectors since pads are fabricated to individual requirements from a large internal pad stock inventory.

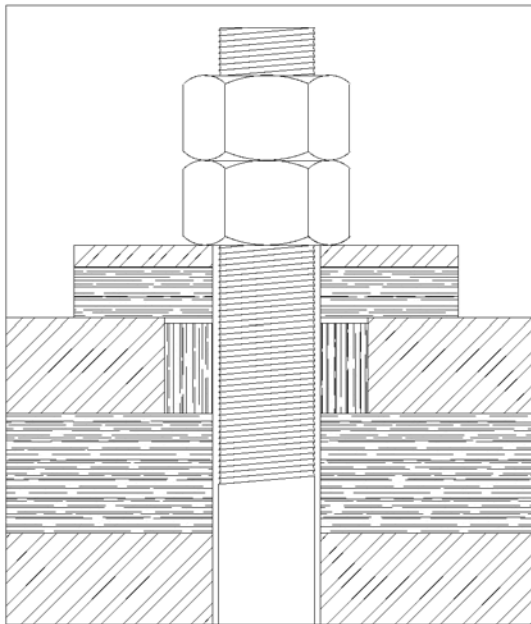


110, 3160 118 Avenue SE, Calgary, AB T2Z 3X1
TOLL FREE: 888 770 8899 MAIN: 403 295 3114
EMAIL: ngcsales@ngc-ps.com WEB: ngc-ps.com

Specification for Fabreeka® Bearing Pads

The bearing pads shall be manufactured of all new (unused) materials and composed of multiple layers of prestressed 50/50 cotton-polyester blend duck, 8.1 ounce per net square yard, duck warp count 50 ± 1 threads per inch and filling count 40 ± 2 threads per inch, impregnated and bound with a high quality, oil-impervious nitrile rubber compound, containing rot and mildew inhibitors and anti-oxidants, compounded into resilient pads of uniform thickness.

The pads shall withstand compressive loads perpendicular to the plane of laminations of not less than 12,000 psi before breakdown. Load deflection properties in accordance with procedures of MIL-C-882, shall be the following maximum percentages of total pad thickness: 11% at 1,000 psi, 17% at 2,000 psi. When loaded to 3,000 psi, permanent set as load is removed in accordance with procedures of MIL-C-882, shall be a maximum of 2.5% of the original "zero point" thickness. Shore "A" Durometer shall not be less than 85 nor more than 95. The ratio of lateral expansion to vertical deflection shall not exceed 0.25 when loaded to 1,500 psi. The material shall not lose effectiveness throughout a temperature range of -65°F to $+200^{\circ}\text{F}$. No visual evidence of damage or deterioration by environmental effects of sunshine, humidity, salt spray, fungus, and dust in accordance with MIL-E-5272. Thickness shall be as shown on drawings within tolerances of ± 0.035 " or $\pm 6\%$, whichever is greater.



Fabreeka® has been used for many years for mounting heavy machinery where absorption of shock and isolation of transmitted vibration is desired. Fabreeka distributes the load properly; prevents cracking and flaking of concrete; eliminates the need for grout; prolongs the life of both machines and buildings. Fabreeka is scientifically constructed to give years of service under the most severe operating conditions.



Fabreeka® manufactures washers, bushings and OEM parts from its Fabreeka® material for a variety of industries. Please contact Fabreeka® for a size and shape to fit your application.

United States

PO Box 210
1023 Turnpike Street
Stoughton, MA 02072
Tel: (781) 341-3655
or: 1-800-322-7352
Fax: (781) 341-3983
info@fabreeka.com

Canada

2907 Portland Drive
Oakville, ON L6H 5S4
Tel: 1-800-322-7352
Fax: (781) 341-3983
info@fabreeka.com

United Kingdom

8 to 12 Jubilee Way
Thackley Old Road
Shipley, West Yorkshire
BD18 1QG
Tel: 44-1274-531333
Fax: 44-1274-531717
info@fabreeka-uk.com

Germany

Hessenring 13 (D-64572)
Postfach 103
D-64570, Buttelborn
Tel: 49-6152-9597-0
Fax: 49-6152-9597-40
info@fabreeka.de

The Netherlands

Molenwerf 12 (1911)
Postbus 133
1910 AC Uitgeest
Tel: 31-2513-20305
Fax: 31-2513-12830
info@fabreeka.nl

www.fabreeka.com